

Product Datasheet

CFLAR Antibody (orb1239385)

Description

CFLAR Antibody

Species/Host

Rabbit

Reactivity

Human, Mouse, Rat

Conjugation

Unconjugated

Tested

ELISA, FC, ICC, IF, IHC-P, WB

Applications

Immunogen

FLIP antibody was raised against a peptide corresponding to 17 amino acids near the amino terminus of human FLIP. The sequence is identical in all FLIP splice variants. The immunogen is located within the first 50 amino acids of FLIP.

Target

CFLAR

Preservatives

FLIP Antibody is supplied in PBS containing 0.02% sodium azide.

Form/Appearance

Liquid

Concentration

1 mg/mL

Storage

FLIP antibody can be stored at 4°C for three months and -20°C, stable for up to one year. As with all antibodies care should be taken to avoid repeated freeze thaw cycles. Antibodies should not be exposed to prolonged high temperatures.

Note

For research use only

Application notes

FLIP antibody can be used for Western blot at 1 - 2 µg/mL. Antibody can also be used for immunocytochemistry starting at 5 µg/mL and immunohistochemistry starting at 5 µg/mL. For immunofluorescence start at 20 µg/mL. Antibody validated: Western Blot in human and mouse samples; Immunohistochemistry in mouse samples; Immunocytochemistry in human samples and Immunofluorescence in human and mouse samples. All other applications and species not yet tested.

Isotype

IgG

Clonality

Polyclonal

MW

Predicted: 53 kDa Observed: 53 kDa

Uniprot ID

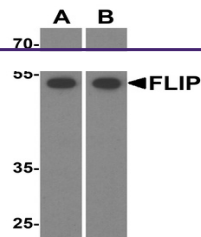
[O15519](#)

NCBI

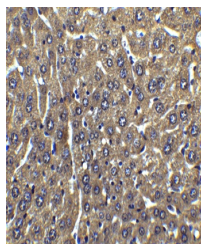
[AAC51622](#)

Dilution Range

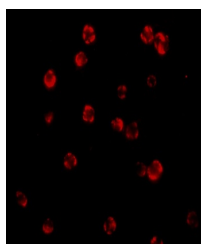
FLIP antibody can be used for Western blot at 1 - 2 µg/mL. Antibody can also be used for



Western blot analysis of FLIP in (A) HeLa...



Immunohistochemistry of FLIP in mouse li...



Immunofluorescence of FLIP in HeLa cells...