

Product Datasheet

SLC9A1 Antibody (orb1239376)

Description

SLC9A1 Antibody

Species/Host

Rabbit

Reactivity

Human, Mouse, Rat

Conjugation

Unconjugated

Tested

ELISA, IF, IHC-P, WB

Applications

Immunogen

Nhe-1 antibody was raised against a 20 amino acid synthetic peptide near the carboxy terminus of the human Nhe-1. The immunogen is located within the last 50 amino acids of Nhe-1.

Target

SLC9A1

Preservatives

Nhe-1 Antibody is supplied in PBS containing 0.02% sodium azide.

Form/Appearance

Liquid

Concentration

1 mg/mL

Storage

Nhe-1 antibody can be stored at 4°C for three months and -20°C, stable for up to one year. As with all antibodies care should be taken to avoid repeated freeze thaw cycles. Antibodies should not be exposed to prolonged high temperatures.

Note

For research use only

Application notes

Nhe-1 antibody can be used for detection of Nhe-1 by Western blot at 1 - 2 µg/mL. Antibody can also be used for immunohistochemistry starting at 2.5 µg/mL. For immunofluorescence start at 20 µg/mL. Antibody validated: Western Blot in rat samples; Immunohistochemistry in human samples and Immunofluorescence in human samples. All other applications and species not yet tested.

Isotype

IgG

Clonality

Polyclonal

MW

Predicted: 52, 90 kDa Observed: 50, 90 kDa

Uniprot ID

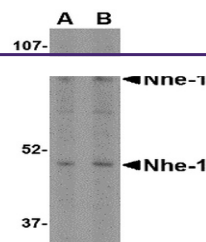
[P19634](#)

NCBI

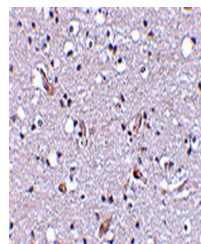
[P19634](#)

Dilution Range

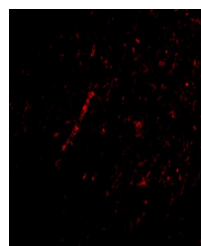
Nhe-1 antibody can be used for detection of Nhe-1 by Western blot at 1 - 2 µg/mL. Antibody can also be used for immunohistochemistry starting at 2.5 µg/mL. For immunofluorescence start at 20 µg/mL. Antibody validated: Western Blot in rat



Western blot analysis of Nhe-1 in rat ki...



Immunohistochemical staining of human br...



Immunofluorescence of Nhe-1 in Human Bra...