

Product Datasheet

NKX2-2 Antibody (orb1239360)

Description

NKX2-2 Antibody

Species/Host

Rabbit

Reactivity

Human, Mouse, Rat

Conjugation

Unconjugated

Tested

ELISA, IF, IHC-P, WB

Applications

Immunogen

NKX2-2 antibody was raised against a 19 amino acid synthetic peptide near the center of human NKX2-2. The immunogen is located within amino acids 90 - 140 of NKX2-2.

Target

NKX2-2

Preservatives

NKX2-2 Antibody is supplied in PBS containing 0.02% sodium azide.

Form/Appearance

Liquid

Concentration

1 mg/mL

Storage

NKX2-2 antibody can be stored at 4°C for three months and -20°C, stable for up to one year. As with all antibodies care should be taken to avoid repeated freeze thaw cycles. Antibodies should not be exposed to prolonged high temperatures.

Note

For research use only

Application notes

NKX2-2 antibody can be used for detection of NKX2-2 by Western blot at 1 µg/mL. Antibody can also be used for immunohistochemistry starting at 2.5 µg/mL. For immunofluorescence start at 20 µg/mL. Antibody validated: Western Blot in rat samples; Immunohistochemistry in human samples and Immunofluorescence in human samples. All other applications and species not yet tested.

Isotype

IgG

Clonality

Polyclonal

Uniprot ID

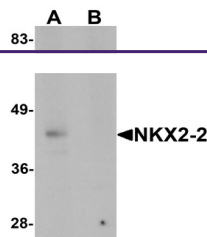
O95096

NCBI

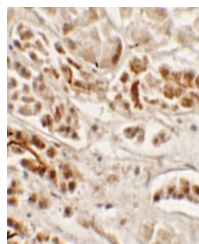
NP_002500

Dilution Range

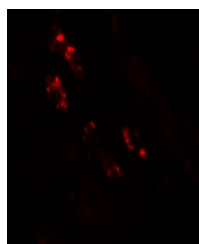
NKX2-2 antibody can be used for detection of NKX2-2 by Western blot at 1 µg/mL. Antibody can also be used for immunohistochemistry starting at 2.5 µg/mL. For immunofluorescence start at 20 µg/mL. Antibody validated: Western Blot in rat samples; Immunohistochemistry in human samples



Western blot analysis of NKX2-2 in rat kidney tissue.



Immunohistochemistry of NKX2-2 in human kidney tissue.



Immunofluorescence of NKX2-2 in human kidney tissue.