

Product Datasheet

NOD2 Antibody (orb1239354)

Description

NOD2 Antibody

Species/Host

Rabbit

Reactivity

Human

Conjugation

Unconjugated

Tested

ELISA, ICC, IF, WB

Applications

Immunogen

Rabbit NOD2 polyclonal antibody was raised against a synthetic peptide corresponding to 14 amino acids at the carboxy terminus of human NOD2. The immunogen is located within the last 50 amino acids of NOD2.

Target

NOD2

Preservatives

NOD2 Antibody is supplied in PBS containing 0.02% sodium azide.

Form/Appearance

Liquid

Concentration

1 mg/mL

Storage

NOD2 antibody can be stored at 4°C for three months and -20°C, stable for up to one year. As with all antibodies care should be taken to avoid repeated freeze thaw cycles. Antibodies should not be exposed to prolonged high temperatures.

Note

For research use only

Application notes

NOD2 antibody can be used for detection of Noxa by Western blot at 2 to 4 µg/mL. Antibody can also be used for immunocytochemistry starting at 10 µg/mL. For immunofluorescence start at 20 µg/mL. Antibody validated: Western Blot in human samples; Immunocytochemistry in human samples and Immunofluorescence in human samples. All other applications and species not yet tested.

Isotype

IgG

Clonality

Polyclonal

MW

114 kDa

Uniprot ID

[Q9HC29](#)

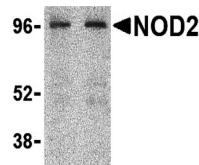
NCBI

[Q9HC29](#)

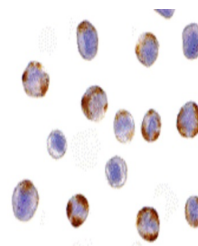
Dilution Range

NOD2 antibody can be used for detection of Noxa by Western blot at 2 to 4 µg/mL. Antibody can also be used for immunocytochemistry starting at 10 µg/mL. For immunofluorescence start at 20 µg/mL. Antibody

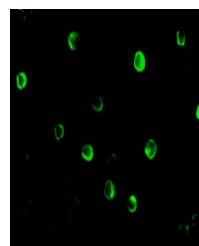
A B



Western blot analysis of NOD2 in HeLa ce...



Immunocytochemistry of NOD2 in HeLa cell...



Immunofluorescence of NOD2 in HeLa cells...