

Product Datasheet

NLRC5 Antibody (orb1239352)

Description

NLRC5 Antibody

Species/Host

Rabbit

Reactivity

Human, Mouse

Conjugation

Unconjugated

Tested

ELISA, ICC, IF, WB

Applications

Immunogen

NOD4 antibody was raised against an 18 amino acid synthetic peptide near the amino terminus of human NOD4. The immunogen is located within amino acids 20 - 70 of NOD4.

Target

NLRC5

Preservatives

NOD4 Antibody is supplied in PBS containing 0.02% sodium azide.

Form/Appearance

Liquid

Concentration

1 mg/mL

Storage

NOD4 antibody can be stored at 4°C for three months and -20°C, stable for up to one year. As with all antibodies care should be taken to avoid repeated freeze thaw cycles. Antibodies should not be exposed to prolonged high temperatures.

Note

For research use only

Application notes

NOD4 antibody can be used for detection of NOD4 by Western blot at 1 µg/mL. Antibody can also be used for immunocytochemistry starting at 10 µg/mL. For immunofluorescence start at 20 µg/mL. Antibody validated: Western Blot in mouse samples; Immunocytochemistry in human samples and Immunofluorescence in human samples. All other applications and species not yet tested.

Isotype

IgG

Clonality

Polyclonal

MW

205 kDa

Uniprot ID

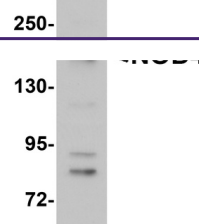
[Q86WI3](#)

NCBI

[NP_115582](#)

Dilution Range

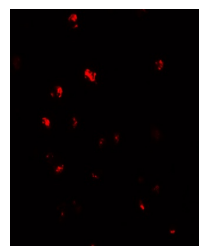
NOD4 antibody can be used for detection of NOD4 by Western blot at 1 µg/mL. Antibody can also be used for immunocytochemistry starting at 10 µg/mL. For immunofluorescence start at 20 µg/mL. Antibody validated: Western Blot in mouse samples;



Western blot analysis of NOD4 in EL4 cells...



Immunocytochemistry of NOD4 in HeLa cells...



Immunofluorescence of NOD4 in HeLa cells...