

## Product Datasheet

### NPC1 Antibody (orb1239337)



## Description

NPC1 Antibody

## Species/Host

Rabbit

## Reactivity

Human, Mouse

## Conjugation

Unconjugated

## Tested

ELISA, IF, IHC-P, WB

## Applications

## Immunogen

NPC1 antibody was raised against a 16 amino acid synthetic peptide from near the carboxy terminus of human NPC1. The immunogen is located within the last 50 amino acids of NPC1.

## Target

NPC1

## Preservatives

NPC1 Antibody is supplied in PBS containing 0.02% sodium azide.

## Form/Appearance

Liquid

## Concentration

1 mg/mL

## Storage

NPC1 antibody can be stored at 4°C, stable for up to one year. Antibodies should not be exposed to prolonged high temperatures.

## Note

For research use only

## Application notes

NPC1 antibody can be used for detection of NPC1 by Western blot at 1 µg/mL. Antibody can also be used for immunohistochemistry starting at 2.5 µg/mL. For immunofluorescence start at 20 µg/mL. Antibody validated: Western Blot in human samples; Immunohistochemistry in mouse samples and Immunofluorescence in mouse samples. All other applications and species not yet tested.

## Isotype

IgG

## Clonality

Polyclonal

## MW

Predicted: 140 kDa Observed: 150 kDa

## Uniprot ID

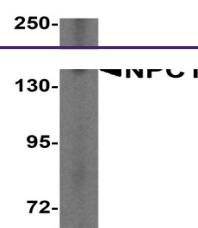
[O15118](#)

## NCBI

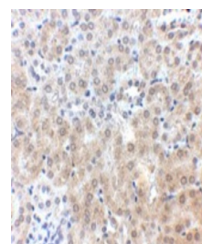
[NP\\_000262](#)

## Dilution Range

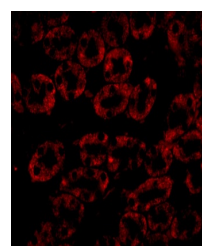
NPC1 antibody can be used for detection of NPC1 by Western blot at 1 µg/mL. Antibody can also be used for immunohistochemistry starting at 2.5 µg/mL. For immunofluorescence start at 20 µg/mL. Antibody validated: Western Blot in human samples; Immunohistochemistry in mouse samples and Immunofluorescence in mouse samples. All other



Western blot analysis of NPC1 in HepG2 c...



Immunohistochemistry of NPC1 in mouse ki...



Immunofluorescence of NPC1 in Mouse Kidn...