

Product Datasheet

DCLK1 Antibody (orb1239319)

Description

DCLK1 Antibody

Species/Host

Rabbit

Reactivity

Human, Mouse, Rat

Conjugation

Unconjugated

Tested

ELISA, IF, IHC-P, WB

Applications

Immunogen

DCLK1 antibody was raised against a 14 amino acid synthetic peptide near the carboxy terminus of human DCLK1. The immunogen is located within the last 50 amino acids of DCLK1.

Target

DCLK1

Preservatives

DCLK1 Antibody is supplied in PBS containing 0.02% sodium azide.

Form/Appearance

Liquid

Concentration

1 mg/mL

Storage

DCLK1 antibody can be stored at 4°C up to one year. Antibodies should not be exposed to prolonged high temperatures.

Note

For research use only

Application notes

DCLK1 antibody can be used for detection of DCLK1 by Western blot at 0.5 - 1 µg/mL. Antibody can also be used for immunohistochemistry starting at 2.5 µg/mL. For immunofluorescence start at 20 µg/mL. Antibody validated: Western Blot in human and rat samples; Immunohistochemistry in mouse and rat samples and Immunofluorescence in mouse samples. All other applications and species not yet tested.

Isotype

IgG

Clonality

Polyclonal

MW

Predicted: 90 kDa Observed: 85 kDa

Uniprot ID

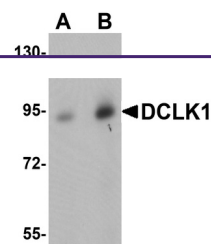
[O15075](#)

NCBI

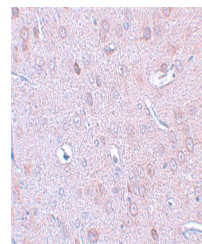
[NP_004725](#)

Dilution Range

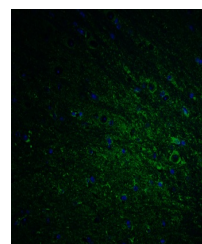
DCLK1 antibody can be used for detection of DCLK1 by Western blot at 0.5 - 1 µg/mL. Antibody can also be used for immunohistochemistry starting at 2.5 µg/mL. For immunofluorescence start at 20 µg/mL. Antibody validated: Western Blot in human and rat samples; Immunohistochemistry in mouse



Western blot analysis of DCLK1 in human ...



Immunohistochemistry of DCLK1 in rat bra...



Immunofluorescence of DCLK1 in mouse bra...