

## Product Datasheet

### PACS2 Antibody (orb1239297)

## Description

PACS2 Antibody

### Species/Host

Rabbit

### Reactivity

Human, Mouse, Rat

### Conjugation

Unconjugated

### Tested Applications

ELISA, IF, IHC-P, WB

### Immunogen

PACS2 antibody was raised against a 17 amino acid peptide near the center of human PACS2. The immunogen is located within amino acids 330 - 380 of PACS2.

### Target

PACS2

### Preservatives

PACS2 antibody is supplied in PBS containing 0.02% sodium azide.

### Form/Appearance

Liquid

### Concentration

1 mg/mL

### Storage

PACS2 antibody can be stored at 4°C for three months and -20°C, stable for up to one year.

### Note

For research use only

### Application notes

PACS2 antibody can be used for detection of PACS2 by Western blot at 1 - 2 µg/mL. Antibody can also be used for immunohistochemistry starting at 5 µg/mL. Antibody validated: Western Blot in mouse samples; Immunohistochemistry in mouse samples and Immunofluorescence in mouse samples. All other applications and species not yet tested.

### Isotype

IgG

### Clonality

Polyclonal

### MW

Predicted: 98 kDa Observed: 95 kDa

### Uniprot ID

[Q86VP3](#)

### NCBI

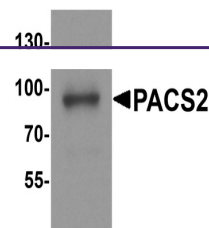
[NP\\_056012](#)

### Dilution Range

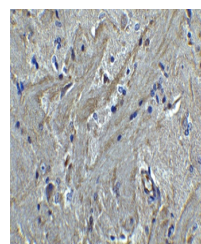
PACS2 antibody can be used for detection of PACS2 by Western blot at 1 - 2 µg/mL. Antibody can also be used for immunohistochemistry starting at 5 µg/mL. Antibody validated: Western Blot in mouse samples; Immunohistochemistry in mouse samples and Immunofluorescence in mouse samples. All other applications and species not yet tested.

### Expiration Date

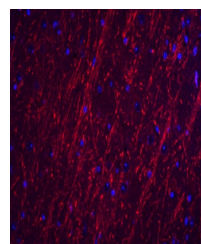
12 months from date of receipt.



Western blot analysis of PACS2 in mouse ...



Immunohistochemistry of PACS2 in mouse b...



Immunofluorescence of PACS2 in mouse bra...