

Product Datasheet

CIDEA Antibody (orb1239296)

Description

CIDEA Antibody

Species/Host

Rabbit

Reactivity

Human, Mouse

Conjugation

Unconjugated

Tested

ELISA, IF, IHC-P, WB

Applications

Immunogen

CIDE-A antibody was raised against an 18 amino acid peptide near the carboxy terminus of mouse CIDE-A. The immunogen is located within the last 50 amino acids of CIDE-A.

Target

CIDEA

Preservatives

CIDE-A Antibody is supplied in PBS containing 0.02% sodium azide.

Form/Appearance

Liquid

Concentration

1 mg/mL

Storage

CIDE-A antibody can be stored at 4°C up to one year. Antibodies should not be exposed to prolonged high temperatures.

Note

For research use only

Application notes

CIDE-A antibody can be used for detection of CIDE-A by Western blot at 0.5 µg/mL. Antibody can also be used for immunohistochemistry starting at 2.5 µg/mL. For immunofluorescence start at 20 µg/mL. Antibody validated: Western Blot in mouse samples; Immunohistochemistry in human and mouse samples and Immunofluorescence in human and mouse samples. All other applications and species not yet tested.

Isotype

IgG

Clonality

Polyclonal

MW

25 kDa

Uniprot ID

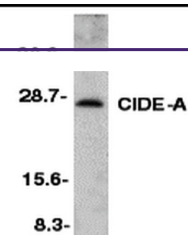
[O60543](#)

NCBI

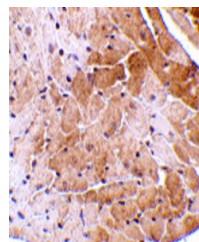
[NP_031728](#)

Dilution Range

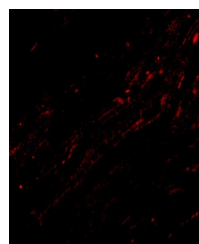
CIDE-A antibody can be used for detection of CIDE-A by Western blot at 0.5 µg/mL. Antibody can also be used for immunohistochemistry starting at 2.5 µg/mL. For immunofluorescence start at 20 µg/mL. Antibody validated: Western Blot in mouse samples; Immunohistochemistry in human and



Western blot analysis of CIDE-A in mouse...



Immunohistochemistry of CIDE-A in mouse ...



Immunofluorescence of CIDE-A in Mouse He...