

Product Datasheet

PAK4 Antibody (orb1239294)

Description

PAK4 Antibody

Species/Host

Rabbit

Reactivity

Human

Conjugation

Unconjugated

Tested

ELISA, IF, IHC-P, WB

Applications

Immunogen

PAK4 antibody was raised against a 13 amino acid synthetic peptide from near the center of human PAK4. The immunogen is located within amino acids 210 - 260 of PAK4.

Target

PAK4

Preservatives

PAK4 Antibody is supplied in PBS containing 0.02% sodium azide.

Form/Appearance

Liquid

Concentration

1 mg/mL

Storage

PAK4 antibody can be stored at 4°C for three months and -20°C, stable for up to one year. As with all antibodies care should be taken to avoid repeated freeze thaw cycles. Antibodies should not be exposed to prolonged high temperatures.

Note

For research use only

Application notes

PAK4 antibody can be used for the detection of PAK4 by Western blot at 1 - 2 µg/mL. Antibody can also be used for immunohistochemistry starting at 10 µg/mL. For immunofluorescence start at 20 µg/mL. Antibody validated: Western Blot in human samples; Immunohistochemistry in human samples and Immunofluorescence in human samples. All other applications and species not yet tested.

Isotype

IgG

Clonality

Polyclonal

MW

Predicted: 65 kDa Observed: 70 kDa

Uniprot ID

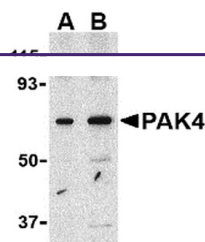
O96013

NCBI

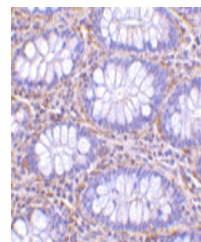
NP_005875

Dilution Range

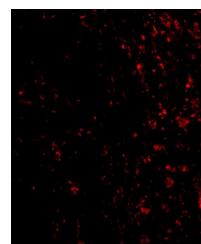
PAK4 antibody can be used for the detection of PAK4 by Western blot at 1 - 2 µg/mL. Antibody can also be used for immunohistochemistry starting at 10 µg/mL. For immunofluorescence start at 20 µg/mL. Antibody validated: Western Blot in human samples;



Western blot analysis of PAK4 in SW480 I...



Immunohistochemistry of PAK4 in human co...



Immunofluorescence of PAK4 in Human Colo...