

Product Datasheet

PAK6 Antibody (orb1239292)

Description

PAK6 Antibody

Species/Host

Rabbit

Reactivity

Human

Conjugation

Unconjugated

Tested

ELISA, ICC, IF, WB

Applications

Immunogen

PAK6 antibody was raised against a 13 amino acid synthetic peptide from near the center of human PAK6. The immunogen is located within amino acids 260 - 310 of PAK6.

Target

PAK6

Preservatives

PAK6 Antibody is supplied in PBS containing 0.02% sodium azide.

Form/Appearance

Liquid

Concentration

1 mg/mL

Storage

PAK6 antibody can be stored at 4°C for three months and -20°C, stable for up to one year. As with all antibodies care should be taken to avoid repeated freeze thaw cycles. Antibodies should not be exposed to prolonged high temperatures.

Note

For research use only

Application notes

PAK6 antibody can be used for the detection of PAK6 by Western blot at 1 - 4 µg/mL. Antibody can also be used for immunocytochemistry starting at 10 µg/mL. For immunofluorescence start at 10 µg/mL. Antibody validated: Western Blot in human samples; Immunocytochemistry in human samples and Immunofluorescence in human samples. All other applications and species not yet tested.

Isotype

IgG

Clonality

Polyclonal

MW

Predicted: 75 kDa Observed: 70 kDa

Uniprot ID

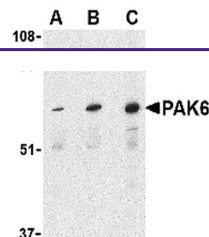
Q9NQU5

NCBI

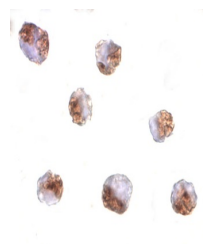
NP_064553

Dilution Range

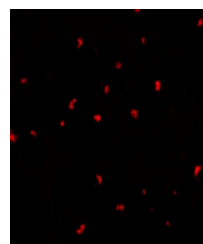
PAK6 antibody can be used for the detection of PAK6 by Western blot at 1 - 4 µg/mL. Antibody can also be used for immunocytochemistry starting at 10 µg/mL. For immunofluorescence start at 10 µg/mL. Antibody validated: Western Blot in human samples;



Western blot analysis of PAK6 in Raji cells...



Immunocytochemistry of PAK6 in Raji cells...



Immunofluorescence of PAK6 in Raji cells...