

Product Datasheet

PDCL3 Antibody (orb1239270)

Description

PDCL3 Antibody

Species/Host

Rabbit

Reactivity

Human, Mouse, Rat

Conjugation

Unconjugated

Tested

ELISA, IF, IHC-P, WB

Applications
Immunogen

PDCL3 antibody was raised against a 14 amino acid peptide near the carboxy terminus of human PDCL3. The immunogen is located within the last 50 amino acids of PDCL3.

Target

PDCL3

Preservatives

PDCL3 antibody is supplied in PBS containing 0.02% sodium azide.

Form/Appearance

Liquid

Concentration

1 mg/mL

Storage

PDCL3 antibody can be stored at 4°C for three months and -20°C, stable for up to one year.

Note

For research use only

Application notes

PDCL3 antibody can be used for detection of PDCL by Western blot at 1 - 2 µg/ml. Antibody can also be used for Immunohistochemistry at 5 µg/mL. For Immunofluorescence start at 20 µg/mL. Antibody validated: Western Blot in human samples; Immunohistochemistry in mouse samples and Immunofluorescence in mouse samples. All other applications and species not yet tested.

Isotype

IgG

Clonality

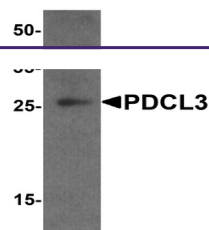
Polyclonal

MW

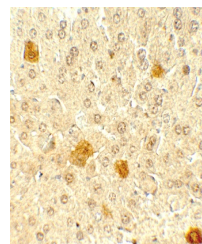
Predicted: 26 kDa Observed: 25 kDa

Uniprot ID
[Q9H2J4](#)
NCBI
[NP_076970](#)
Dilution Range

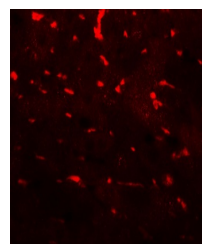
PDCL3 antibody can be used for detection of PDCL by Western blot at 1 - 2 µg/ml. Antibody can also be used for Immunohistochemistry at 5 µg/mL. For Immunofluorescence start at 20 µg/mL. Antibody validated: Western Blot in human samples; Immunohistochemistry in mouse samples and Immunofluorescence in mouse samples. All other applications and species not yet tested.



Western blot analysis of PDCL3 in human ...



Immunohistochemistry of PDCL3 in mouse l...



Immunofluorescence of PDCL3 in mouse liv...