

Product Datasheet

Casp12 Antibody (orb1239263)

Description

Casp12 Antibody

Species/Host

Rabbit

Reactivity

Human, Mouse, Rat

Conjugation

Unconjugated

Tested

ELISA, IF, IHC-P, WB

Applications

Immunogen

Caspase-12 antibody was raised against a synthetic peptide corresponding to 16 amino acids within the large cleavage product of murine caspase-12. The immunogen is located within amino acids 170 - 220 of Caspase-12.

Target

Casp12

Preservatives

Caspase-12 Antibody is supplied in PBS containing 0.02% sodium azide. (Large)

Form/Appearance

Liquid

Concentration

1 mg/mL

Storage

Caspase-12 (Large) antibody can be stored at -20°C, stable for one year. As with all antibodies care should be taken to avoid repeated freeze thaw cycles. Antibodies should not be exposed to prolonged high temperatures.

Note

For research use only

Application notes

Caspase-12 (large) antibody can be used for the detection of both the propeptide and cleaved forms of caspase-12 by Western blot at 0.25 to 2 µg/mL. Antibody can also be used for immunohistochemistry starting at 2 µg/mL. For immunofluorescence start at 10 µg/mL. Antibody validated: Western Blot in human, mouse, and rat samples; Immunohistochemistry in human, mouse, and rat samples and Immunofluorescence in human, mouse, and rat samples. All other applications and species not yet tested.

Isotype

IgG

Clonality

Polyclonal

MW

Predicted: 46 kDa Observed: 46 kDa

Uniprot ID

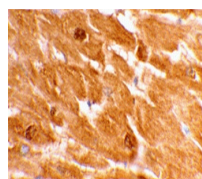
[O08736](#)

NCBI

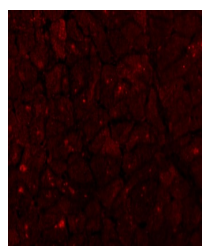
[CAA73532](#)

Dilution Range

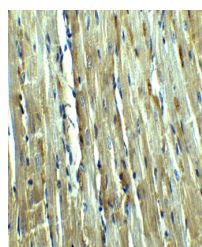
Caspase-12 (large) antibody can be used for the



Immunohistochemical staining of human he...



Immunofluorescence of Caspase-12 in Huma...



Immunohistochemistry of Caspase-12 in ra...