

Product Datasheet

C9orf116 Antibody (orb1239230)

Description

C9orf116 Antibody

Species/Host

Rabbit

Reactivity

Human, Mouse

Conjugation

Unconjugated

Tested

ELISA, ICC, WB

Applications

Immunogen

PIERCE1 antibody was raised against a 16 amino acid synthetic peptide near the amino terminus of human PIERCE1. The immunogen is located within the first 50 amino acids of PIERCE1.

Target

C9orf116

Preservatives

PIERCE1 Antibody is supplied in PBS containing 0.02% sodium azide.

Form/Appearance

Liquid

Concentration

1 mg/mL

Storage

PIERCE1 antibody can be stored at 4°C for three months and -20°C, stable for up to one year. As with all antibodies care should be taken to avoid repeated freeze thaw cycles. Antibodies should not be exposed to prolonged high temperatures.

Note

For research use only

Application notes

PIERCE1 antibody can be used for detection of PIERCE1 by Western blot at 1 µg/mL. Antibody can also be used for immunocytochemistry starting at 2.5 µg/mL. Antibody validated: Western Blot in mouse samples and Immunocytochemistry in mouse samples. All other applications and species not yet tested.

Isotype

IgG

Clonality

Polyclonal

Uniprot ID

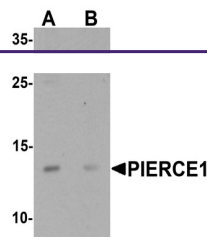
[Q5BN46](#)

NCBI

[Q5BN46](#)

Dilution Range

PIERCE1 antibody can be used for detection of PIERCE1 by Western blot at 1 µg/mL. Antibody can also be used for immunocytochemistry starting at 2.5 µg/mL. Antibody validated: Western Blot in mouse samples and Immunocytochemistry in mouse samples. All other applications and species not yet tested.



Western blot analysis of PIERCE1 in A20 ...



Immunocytochemistry of PIERCE1 in A20 ce...