

Product Datasheet

AGAP2 Antibody (orb1239226)

Description

AGAP2 Antibody

Species/Host

Rabbit

Reactivity

Human, Mouse

Conjugation

Unconjugated

Tested Applications

ELISA, IHC-P, WB

Immunogen

PIKE antibody was raised against a peptide corresponding to 15 amino acids near the C-terminus of human PIKE. The immunogen is located within the last 50 amino acids of PIKE.

Target

AGAP2

Preservatives

PIKE Antibody is supplied in PBS containing 0.02% sodium azide.

Form/Appearance

Liquid

Concentration

1 mg/mL

Storage

PIKE antibody can be stored at 4°C for three months and -20°C, stable for up to one year. As with all antibodies care should be taken to avoid repeated freeze thaw cycles. Antibodies should not be exposed to prolonged high temperatures.

Note

For research use only

Application notes

PIKE antibody can be used for detection of PIKE by Western blot at 0.5 to 2 µg/mL. Antibody can also be used for immunohistochemistry starting at 10 µg/mL. Antibody validated: Western Blot in mouse samples and Immunohistochemistry in mouse samples. All other applications and species not yet tested.

Isotype

IgG

Clonality

Polyclonal

Uniprot ID

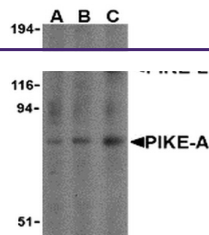
[Q99490](#)

NCBI

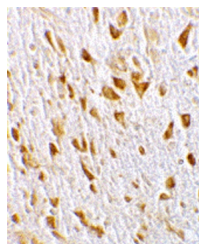
[AAM97540](#)

Dilution Range

PIKE antibody can be used for detection of PIKE by Western blot at 0.5 to 2 µg/mL. Antibody can also be used for immunohistochemistry starting at 10 µg/mL. Antibody validated: Western Blot in mouse samples and Immunohistochemistry in mouse samples. All other applications and species not yet tested.



Western blot analysis of PIKE in mouse b...



Immunohistochemistry of PIKE in mouse br...