

Product Datasheet

AXIN2 Antibody (orb1239225)

Description

AXIN2 Antibody

Species/Host

Rabbit

Reactivity

Human, Mouse, Rat

Conjugation

Unconjugated

Tested

ELISA, IF, IHC-P, WB

Applications

Immunogen

AXIN2 antibody was raised against a 20 amino acid synthetic peptide near the carboxy terminus of human AXIN2. The immunogen is located within amino acids 780 - 830 of AXIN2.

Target

AXIN2

Preservatives

AXIN2 Antibody is supplied in PBS containing 0.02% sodium azide.

Form/Appearance

Liquid

Concentration

1 mg/mL

Storage

AXIN2 antibody can be stored at 4°C for three months and -20°C, stable for up to one year. As with all antibodies care should be taken to avoid repeated freeze thaw cycles. Antibodies should not be exposed to prolonged high temperatures.

Note

For research use only

Application notes

AXIN2 antibody can be used for detection of AXIN2 by Western blot at 1 µg/mL. Antibody can also be used for immunohistochemistry starting at 5 µg/mL. For immunofluorescence start at 20 µg/mL. Antibody validated: Western Blot in mouse samples; Immunohistochemistry in mouse and rat samples and Immunofluorescence in mouse and rat samples. All other applications and species not yet tested.

Isotype

IgG

Clonality

Polyclonal

MW

85, 93 kDa

Uniprot ID

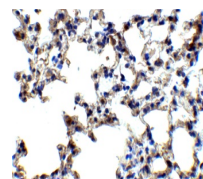
[Q9Y2T1](#)

NCBI

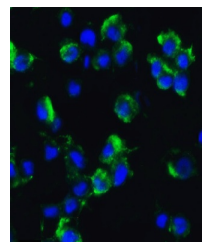
[AAF22799](#)

Dilution Range

AXIN2 antibody can be used for detection of AXIN2 by Western blot at 1 µg/mL. Antibody can also be used for immunohistochemistry starting at 5 µg/mL. For immunofluorescence start at 20 µg/mL. Antibody validated: Western Blot in mouse samples;

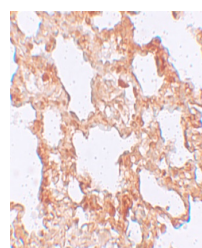


Immunohistochemistry of AXIN2 in mouse l...



Immunofluorescence of AXIN2 in Rat Lung

...



Immunohistochemistry of AXIN2 in rat lun...