

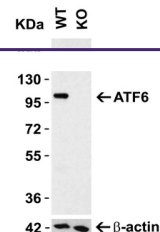
Product Datasheet

ATF6 Antibody (orb1239224)

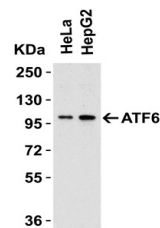
Description

ATF6 Antibody

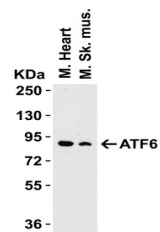
| | |
|----------------------------|---|
| Species/Host | Rabbit |
| Reactivity | Human, Mouse, Rat |
| Conjugation | Unconjugated |
| Tested Applications | ELISA, IF, IHC, WB |
| Immunogen | ATF6 antibody was raised against a 17 amino acid synthetic peptide from near the amino terminus of human ATF6. The immunogen is located within amino acids 30 - 80 of ATF6. |
| Target | ATF6 |
| Preservatives | ATF6 Antibody is supplied in PBS containing 0.02% sodium azide. |
| Form/Appearance | Liquid |
| Concentration | 1 mg/mL |
| Storage | ATF6 antibody can be stored at 4°C for three months and -20°C, stable for up to one year. As with all antibodies care should be taken to avoid repeated freeze thaw cycles. Antibodies should not be exposed to prolonged high temperatures. |
| Note | For research use only |
| Application notes | WB: 0.5-1 µg/mL; IHC: 5 µg/mL; IF: 20 µg/mL. Antibody validated: Western Blot in human, mouse and rat samples; Immunohistochemistry in mouse and rat samples; Immunofluorescence in human samples. All other applications and species not yet tested. |
| Isotype | IgG |
| Clonality | Polyclonal |
| Uniprot ID | P18850 |
| NCBI | NP_031374 |
| Dilution Range | WB: 0.5-1 µg/mL; IHC: 5 µg/mL; IF: 20 µg/mL. Antibody validated: Western Blot in human, mouse and rat samples; Immunohistochemistry in mouse and rat samples; Immunofluorescence in human samples. All other applications and species not yet tested. |
| Expiration Date | 12 months from date of receipt. |



KO Validation of ATF6.
Loading: 15 µg o...



WB Validation in Human Cell Lines. Loadi...



WB Validation in Mouse Tissue.
Loading: ...