

Product Datasheet

PLAC1 Antibody (orb1239214)

Description

PLAC1 Antibody

Species/Host

Rabbit

Reactivity

Human

Conjugation

Unconjugated

Tested

ELISA, ICC, IF, WB

Applications

Immunogen

PLAC1 antibody was raised against a 15 amino acid synthetic peptide near the carboxy terminus of human PLAC1. The immunogen is located within amino acids 130 - 180 of PLAC1.

Target

PLAC1

Preservatives

PLAC1 Antibody is supplied in PBS containing 0.02% sodium azide.

Form/Appearance

Liquid

Concentration

1 mg/mL

Storage

PLAC1 antibody can be stored at 4°C for three months and -20°C, stable for up to one year. As with all antibodies care should be taken to avoid repeated freeze thaw cycles. Antibodies should not be exposed to prolonged high temperatures.

Note

For research use only

Application notes

PLAC1 antibody can be used for detection of PLAC1 by Western blot at 1 µg/mL. Antibody can also be used for immunocytochemistry starting at 10 µg/mL. For immunofluorescence start at 20 µg/mL. Antibody validated: Western Blot in human samples; Immunocytochemistry in human samples and Immunofluorescence in human samples. All other applications and species not yet tested.

Isotype

IgG

Clonality

Polyclonal

Uniprot ID

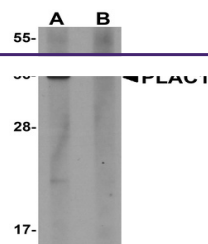
[Q9HBJ0](#)

NCBI

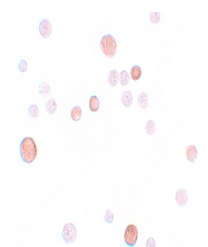
[NP_068568](#)

Dilution Range

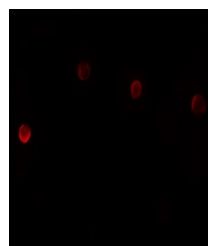
PLAC1 antibody can be used for detection of PLAC1 by Western blot at 1 µg/mL. Antibody can also be used for immunocytochemistry starting at 10 µg/mL. For immunofluorescence start at 20 µg/mL. Antibody validated: Western Blot in human samples; Immunocytochemistry in human samples and



Western blot analysis of PLAC1 in human ...



Immunocytochemistry of PLAC1 in HeLa cell...



Immunofluorescence of PLAC1 in HeLa cell...