

Product Datasheet

PLAGL2 Antibody (orb1239210)

Description

PLAGL2 Antibody

Species/Host

Rabbit

Reactivity

Human, Mouse, Rat

Conjugation

Unconjugated

Tested

ELISA, IF, IHC-P, WB

Applications

Immunogen

PLAGL2 antibody was raised against a 19 amino acid synthetic peptide near the amino terminus of human PLAGL2. The immunogen is located within amino acids 40 - 90 of PLAGL2.

Target

PLAGL2

Preservatives

PLAGL2 Antibody is supplied in PBS containing 0.02% sodium azide.

Form/Appearance

Liquid

Concentration

1 mg/mL

Storage

PLAGL2 antibody can be stored at 4°C for three months and -20°C, stable for up to one year. As with all antibodies care should be taken to avoid repeated freeze thaw cycles. Antibodies should not be exposed to prolonged high temperatures.

Note

For research use only

Application notes

PLAGL2 antibody can be used for detection of PLAGL2 by Western blot at 1 - 2 µg/mL. Antibody can also be used for Immunohistochemistry at 2 µg/mL. For immunofluorescence start at 20 µg/mL. Antibody validated: Western Blot in rat samples; Immunohistochemistry in rat samples and Immunofluorescence in rat samples. All other applications and species not yet tested.

Isotype

IgG

Clonality

Polyclonal

MW

55 kDa

Uniprot ID

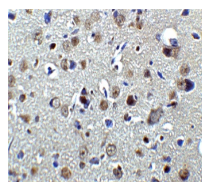
[Q9UPG8](#)

NCBI

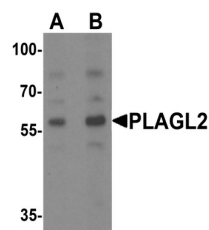
[NP_002648](#)

Dilution Range

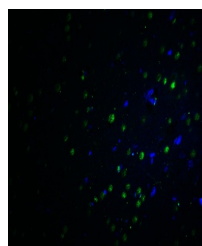
PLAGL2 antibody can be used for detection of PLAGL2 by Western blot at 1 - 2 µg/mL. Antibody can also be used for Immunohistochemistry at 2 µg/mL. For immunofluorescence start at 20 µg/mL. Antibody validated: Western Blot in rat samples;



Immunohistochemistry of PLAGL2 in rat br...



Western blot analysis of PLAGL2 in rat b...



Immunofluorescence of PLAGL2 in rat brai...