

Product Datasheet

PMEPA1 Antibody (orb1239204)

Description

PMEPA1 Antibody

Species/Host

Rabbit

Reactivity

Human, Mouse, Rat

Conjugation

Unconjugated

Tested

ELISA, IHC-P, WB

Applications

Immunogen

PMEPA1 antibody was raised against a 16 amino acid peptide near the center of human PMEPA1. The immunogen is located within amino acids 160 - 210 of PMEPA1.

Target

PMEPA1

Preservatives

PMEPA1 antibody is supplied in PBS containing 0.02% sodium azide.

Form/Appearance

Liquid

Concentration

1 mg/mL

Storage

PMEPA1 antibody can be stored at 4°C for three months and -20°C, stable for up to one year.

Note

For research use only

Application notes

PMEPA1 antibody can be used for detection of PMEPA1 by Western blot at 1 - 2 µg/ml. Antibody can also be used for immunohistochemistry starting at 2.5 µg/mL. Antibody validated: Western Blot in human samples and Immunohistochemistry in human samples. All other applications and species not yet tested.

Isotype

IgG

Clonality

Polyclonal

MW

Predicted: 26, 28, 32 kDa Observed: 27 kDa

Uniprot ID

[Q969W9](#)

NCBI

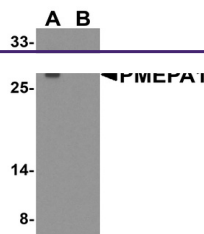
[NP_064567](#)

Dilution Range

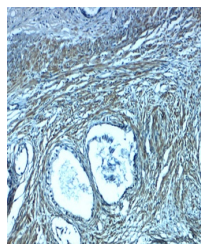
PMEPA1 antibody can be used for detection of PMEPA1 by Western blot at 1 - 2 µg/ml. Antibody can also be used for immunohistochemistry starting at 2.5 µg/mL. Antibody validated: Western Blot in human samples and Immunohistochemistry in human samples. All other applications and species not yet tested.

Expiration Date

12 months from date of receipt.



Western blot analysis of PMEPA1 in A549 cells



Immunohistochemistry of PMEPA1 in human tissue