

Product Datasheet

POU3F2 Antibody (orb1239200)

Description

POU3F2 Antibody

Species/Host

Rabbit

Reactivity

Human, Mouse, Rat

Conjugation

Unconjugated

Tested

ELISA, IF, WB

Applications

Immunogen

Rabbit polyclonal POU3F2 antibody was raised against an 18 amino acid peptide near the carboxy terminus of human POU3F2. The immunogen is located within the last 50 amino acids of POU3F2.

Target

POU3F2

Preservatives

POU3F2 Antibody is supplied in PBS containing 0.02% sodium azide.

Form/Appearance

Liquid

Concentration

1 mg/mL

Storage

POU3F2 antibody can be stored at 4°C for three months and -20°C, stable for up to one year. As with all antibodies care should be taken to avoid repeated freeze thaw cycles. Antibodies should not be exposed to prolonged high temperatures.

Note

For research use only

Application notes

POU3F2 antibody can be used for detection of POU3F2 by Western blot at 1 - 2 µg/mL. For immunofluorescence start at 20 µg/mL. Antibody validated: Western Blot in mouse samples and Immunofluorescence in human samples. All other applications and species not yet tested.

Isotype

IgG

Clonality

Polyclonal

MW

49 kDa

Uniprot ID

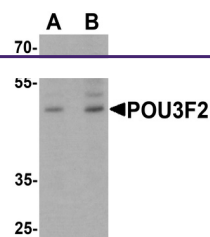
[P20265](#)

NCBI

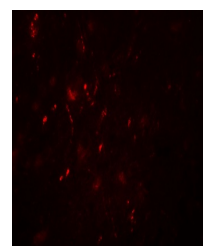
[NP_005595](#)

Dilution Range

POU3F2 antibody can be used for detection of POU3F2 by Western blot at 1 - 2 µg/mL. For immunofluorescence start at 20 µg/mL. Antibody validated: Western Blot in mouse samples and Immunofluorescence in human samples. All other applications and species not yet tested.



Western blot analysis of POU3F2 in 3T3 c...



Immunofluorescence of POU3F2 in human br...