

Product Datasheet

CBLN1 Antibody (orb1239190)

Description

CBLN1 Antibody

Species/Host

Rabbit

Reactivity

Human, Mouse, Rat

Conjugation

Unconjugated

Tested

ELISA, ICC, WB

Applications
Immunogen

Precerebellin antibody was raised against a 16 amino acid synthetic peptide from near the carboxy-terminus human precerebellin. The immunogen is located within the last 50 amino acids of Precerebellin.

Target

CBLN1

Preservatives

Precerebellin Antibody is supplied in PBS containing 0.02% sodium azide.

Form/Appearance

Liquid

Concentration

1 mg/mL

Storage

Precerebellin antibody can be stored at 4°C for three months and -20°C, stable for up to one year. As with all antibodies care should be taken to avoid repeated freeze thaw cycles. Antibodies should not be exposed to prolonged high temperatures.

Note

For research use only

Application notes

Precerebellin antibody can be used for the detection of precerebellin by Western blot at 2 - 4 µg/mL. Antibody can also be used for immunocytochemistry starting at 10 µg/mL. Antibody validated: Western Blot in human samples and Immunocytochemistry in mouse samples. All other applications and species not yet tested.

Isotype

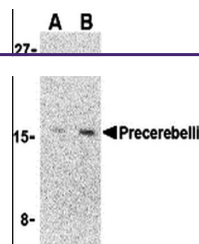
IgG

Clonality

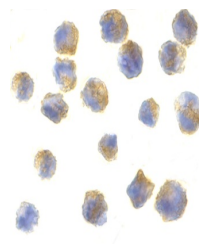
Polyclonal

Uniprot ID
P23435
NCBI
P23435
Dilution Range

Precerebellin antibody can be used for the detection of precerebellin by Western blot at 2 - 4 µg/mL. Antibody can also be used for immunocytochemistry starting at 10 µg/mL. Antibody validated: Western Blot in human samples and Immunocytochemistry in mouse samples. All other applications and species



Western blot analysis of precerebellin i...



Immunocytochemistry of precerebellin in ...