

Product Datasheet

CBLN1 Antibody (orb1239189)

Description

CBLN1 Antibody

Species/Host

Rabbit

Reactivity

Human, Mouse, Rat

Conjugation

Unconjugated

Tested

ELISA, IHC-P, WB

Applications

Immunogen

Precerebellin antibody was raised against a 15 amino acid synthetic peptide from the middle of human precerebellin. The immunogen is located within amino acids 50 - 100 of Precerebellin.

Target

CBLN1

Preservatives

Precerebellin Antibody is supplied in PBS containing 0.02% sodium azide.

Form/Appearance

Liquid

Concentration

1 mg/mL

Storage

Precerebellin antibody can be stored at 4°C for three months and -20°C, stable for up to one year. As with all antibodies care should be taken to avoid repeated freeze thaw cycles. Antibodies should not be exposed to prolonged high temperatures.

Note

For research use only

Application notes

Precerebellin antibody can be used for the detection of precerebellin by Western blot at 2 - 4 µg/mL. Antibody can also be used for immunohistochemistry starting at 2 µg/mL. Antibody validated: Western Blot in mouse samples and Immunohistochemistry in rat samples. All other applications and species not yet tested.

Isotype

IgG

Clonality

Polyclonal

Uniprot ID

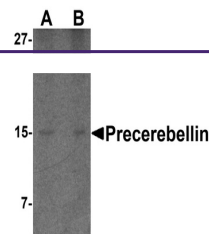
P23435

NCBI

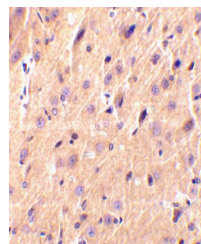
P23435

Dilution Range

Precerebellin antibody can be used for the detection of precerebellin by Western blot at 2 - 4 µg/mL. Antibody can also be used for immunohistochemistry starting at 2 µg/mL. Antibody validated: Western Blot in mouse samples and Immunohistochemistry in rat samples. All other applications and species not yet tested.



Western blot analysis of precerebellin i...



Immunohistochemical staining of rat brai...