

Product Datasheet

PRICKLE1 Antibody (orb1239187)

Description

PRICKLE1 Antibody

Species/Host

Rabbit

Reactivity

Human, Mouse, Rat

Conjugation

Unconjugated

Tested

ELISA, IF, WB

Applications

Immunogen

PRICKLE1 antibody was raised against a 19 amino acid synthetic peptide near the carboxy terminus of human PRICKLE1. The immunogen is located within the last 50 amino acids of PRICKLE1.

Target

PRICKLE1

Preservatives

PRICKLE1 Antibody is supplied in PBS containing 0.02% sodium azide.

Form/Appearance

Liquid

Concentration

1 mg/mL

Storage

PRICKLE1 antibody can be stored at 4°C for three months and -20°C, stable for up to one year. As with all antibodies care should be taken to avoid repeated freeze thaw cycles. Antibodies should not be exposed to prolonged high temperatures.

Note

For research use only

Application notes

PRICKLE1 antibody can be used for detection of PRICKLE1 by Western blot at 1 µg/mL. Antibody can also be used for immunofluorescence starting at 20 µg/mL. For immunofluorescence start at 20 µg/mL. Antibody validated: Western Blot in human samples and Immunofluorescence in human samples. All other applications and species not yet tested.

Isotype

IgG

Clonality

Polyclonal

MW

Predicted: 46, 91 kDa Observed: 52, 90 kDa

Uniprot ID

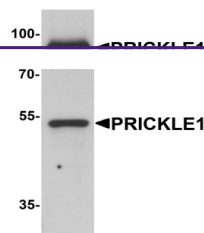
[Q96MT3](#)

NCBI

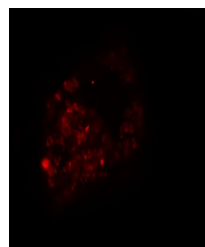
[NP_694571](#)

Dilution Range

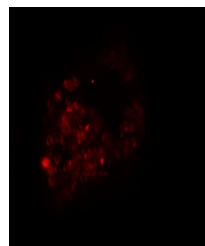
PRICKLE1 antibody can be used for detection of PRICKLE1 by Western blot at 1 µg/mL. Antibody can also be used for immunofluorescence starting at 20 µg/mL. For immunofluorescence start at 20 µg/mL. Antibody validated: Western Blot in human



Western blot analysis of PRICKLE1 in hum...



Immunofluorescence of PRICKLE1 in human ...



Immunofluorescence of PRICKLE1 in Human ...