

## Product Datasheet

### PROM1 Antibody (orb1239183)

**Description**
**PROM1 Antibody**
**Species/Host**

Rabbit

**Reactivity**

Human, Mouse, Rat

**Conjugation**

Unconjugated

**Tested**

ELISA, ICC, IF, WB

**Applications**
**Immunogen**

PROM1 antibody was raised against an 18 amino acid peptide near the carboxy terminus of human PROM1. The immunogen is located within the last 50 amino acids of PROM1.

**Target**

PROM1

**Preservatives**

PROM1 Antibody is supplied in PBS containing 0.02% sodium azide.

**Form/Appearance**

Liquid

**Concentration**

1 mg/mL

**Storage**

PROM1 antibody can be stored at 4°C up to one year. Antibodies should not be exposed to prolonged high temperatures.

**Note**

For research use only

**Application notes**

PROM1 antibody can be used for detection of PROM1 by Western blot at 1 - 2 µg/ml. Antibody can also be used for Immunocytochemistry at 2.5 µg/mL. For Immunofluorescence start at 20 µg/mL. Antibody validated: Western Blot in human samples; Immunocytochemistry in human samples and Immunofluorescence in human samples. All other applications and species not yet tested.

**Isotype**

IgG

**Clonality**

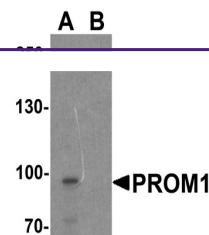
Polyclonal

**MW**

Predicted: 95 kDa Observed: 97 kDa

**Uniprot ID**
[O43490](#)
**NCBI**
[NP\\_006008](#)
**Dilution Range**

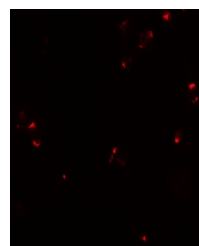
PROM1 antibody can be used for detection of PROM1 by Western blot at 1 - 2 µg/ml. Antibody can also be used for Immunocytochemistry at 2.5 µg/mL. For Immunofluorescence start at 20 µg/mL. Antibody validated: Western Blot in human samples; Immunocytochemistry in human samples and Immunofluorescence in human samples. All other



Western blot analysis of PROM1 in Jurkat...



Immunocytochemistry of PROM1 in Jurkat c...



Immunofluorescence of PROM1 in Jurkat ce...