

Product Datasheet

ProSAPiP1 Antibody (orb1239182)

Description

ProSAPiP1 Antibody

Species/Host

Rabbit

Reactivity

Human, Mouse, Rat

Conjugation

Unconjugated

Tested

ELISA, IF, IHC-P, WB

Applications

Immunogen

Prosapip1 antibody was raised against a 16 amino acid synthetic peptide from near the carboxy terminus of human Prosapip1. The immunogen is located within amino acids 590 - 640 of Prosapip1.

Target

ProSAPiP1

Preservatives

Prosapip1 Antibody is supplied in PBS containing 0.02% sodium azide.

Form/Appearance

Liquid

Concentration

1 mg/mL

Storage

Prosapip1 antibody can be stored at 4°C for three months and -20°C, stable for up to one year. As with all antibodies care should be taken to avoid repeated freeze thaw cycles. Antibodies should not be exposed to prolonged high temperatures.

Note

For research use only

Application notes

Prosapip1 antibody can be used for detection of Prosapip1 by Western blot at 1 µg/mL. Antibody can also be used for immunohistochemistry starting at 2.5 µg/mL. For immunofluorescence start at 20 µg/mL. Antibody validated: Western Blot in human samples; Immunohistochemistry in rat samples and Immunofluorescence in rat samples. All other applications and species not yet tested.

Isotype

IgG

Clonality

Polyclonal

Uniprot ID

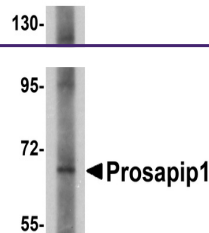
O60299

NCBI

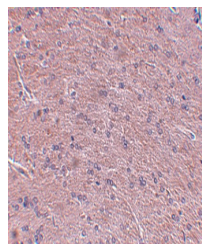
NP_055546

Dilution Range

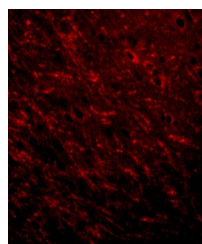
Prosapip1 antibody can be used for detection of Prosapip1 by Western blot at 1 µg/mL. Antibody can also be used for immunohistochemistry starting at 2.5 µg/mL. For immunofluorescence start at 20 µg/mL. Antibody validated: Western Blot in human samples; Immunohistochemistry in rat



Western blot analysis of Prosapip1 in SK...



Immunohistochemistry of Prosapip1 in rat...



Immunofluorescence of Prosapip1 in rat ...