

Product Datasheet

PTEN Antibody (orb1239176)

Description

PTEN Antibody

Species/Host

Rabbit

Reactivity

Human, Mouse

Conjugation

Unconjugated

Tested

ELISA, IF, IP, WB

Applications

Immunogen

PTEN antibody was raised against a 15 amino acid synthetic peptide from near the amino terminus of human PTEN. The immunogen is located within the first 50 amino acids of PTEN.

Target

PTEN

Preservatives

PTEN Antibody is supplied in PBS containing 0.02% sodium azide.

Form/Appearance

Liquid

Concentration

1 mg/mL

Storage

PTEN antibody can be stored at 4°C for three months and -20°C, stable for up to one year. As with all antibodies care should be taken to avoid repeated freeze thaw cycles. Antibodies should not be exposed to prolonged high temperatures.

Note

For research use only

Application notes

PTEN antibody can be used for the detection of PTEN by Western blot at 1 to 2 µg/mL. For immunofluorescence start at 2 µg/mL. Antibody validated: Western Blot in human samples and Immunofluorescence in mouse samples. All other applications and species not yet tested.

Isotype

IgG

Clonality

Polyclonal

MW

Predicted: 44, 63 kDa Observed: 46 kDa

Uniprot ID

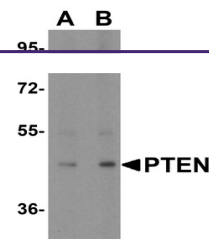
[P60484](#)

NCBI

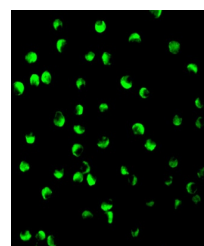
[P60484](#)

Dilution Range

PTEN antibody can be used for the detection of PTEN by Western blot at 1 to 2 µg/mL. For immunofluorescence start at 2 µg/mL. Antibody validated: Western Blot in human samples and Immunofluorescence in mouse samples. All other applications and species not yet tested.



Western blot analysis of PTEN in human brain tissue.



Immunofluorescence of PTEN in P815 cells.