

Product Datasheet

RABGEF1 Antibody (orb1239165)

Description

RABGEF1 Antibody

Species/Host

Rabbit

Reactivity

Human, Mouse, Rat

Conjugation

Unconjugated

Tested

ELISA, IF, IHC-P, WB

Applications

Immunogen

RABEX5 antibody was raised against a 19 amino acid synthetic peptide near the center terminus of human RABEX5. The immunogen is located within amino acids 430 - 480 of RABEX5.

Target

RABGEF1

Preservatives

RABEX5 Antibody is supplied in PBS containing 0.02% sodium azide.

Form/Appearance

Liquid

Concentration

1 mg/mL

Storage

RABEX5 antibody can be stored at 4°C for three months and -20°C, stable for up to one year. As with all antibodies care should be taken to avoid repeated freeze thaw cycles. Antibodies should not be exposed to prolonged high temperatures.

Note

For research use only

Application notes

RABEX5 antibody can be used for detection of RABEX5 by Western blot at 1 µg/mL. Antibody can also be used for immunohistochemistry starting at 5 µg/mL. For immunofluorescence start at 20 µg/mL. Antibody validated: Western Blot in human samples; Immunohistochemistry in mouse samples and Immunofluorescence in mouse samples. All other applications and species not yet tested.

Isotype

IgG

Clonality

Polyclonal

Uniprot ID

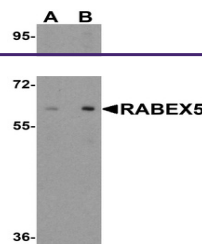
[Q9UJ41](#)

NCBI

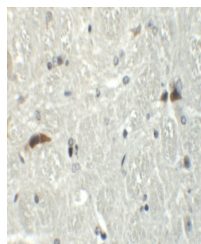
[NP_055319](#)

Dilution Range

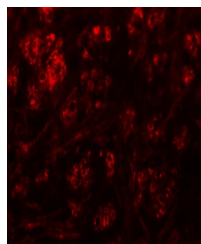
RABEX5 antibody can be used for detection of RABEX5 by Western blot at 1 µg/mL. Antibody can also be used for immunohistochemistry starting at 5 µg/mL. For immunofluorescence start at 20 µg/mL. Antibody validated: Western Blot in human samples; Immunohistochemistry in mouse samples



Western blot analysis of RABEX5 in human...



Immunohistochemistry of RABEX5 in mouse ...



Immunofluorescence of RABEX5 in mouse br...