

## Product Datasheet

### Rptor Antibody (orb1239157)

**Description**

Raptor Antibody

**Species/Host**

Rabbit

**Reactivity**

Human, Mouse

**Conjugation**

Unconjugated

**Tested**

ELISA, ICC, IF, WB

**Applications**
**Immunogen**

Raptor polyclonal antibody was raised against a 13 amino acid synthetic peptide from near the amino-terminus of human Raptor. The immunogen is located within amino acids 90 - 140 of Raptor.

**Target**

Raptor

**Preservatives**

Raptor Antibody is supplied in PBS containing 0.02% sodium azide.

**Form/Appearance**

Liquid

**Concentration**

1 mg/mL

**Storage**

Raptor antibody can be stored at 4°C for three months and -20°C, stable for up to one year. As with all antibodies care should be taken to avoid repeated freeze thaw cycles. Antibodies should not be exposed to prolonged high temperatures.

**Note**

For research use only

**Application notes**

Raptor antibody can be used for the detection of Raptor by Western blot at 2 and 4 µg/mL. Antibody can also be used for immunocytochemistry starting at 10 µg/mL. For immunofluorescence start at 10 µg/mL. Antibody validated: Western Blot in mouse samples; Immunocytochemistry in mouse samples and Immunofluorescence in mouse samples. All other applications and species not yet tested.

**Isotype**

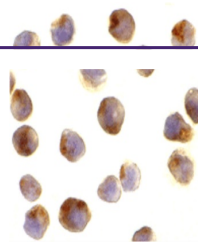
IgG

**Clonality**

Polyclonal

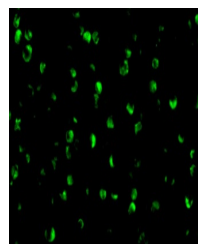
**Uniprot ID**
**Q8K4Q0**
**NCBI**
**Q8K4Q0**
**Dilution Range**

Raptor antibody can be used for the detection of Raptor by Western blot at 2 and 4 µg/mL. Antibody can also be used for immunocytochemistry starting at 10 µg/mL. For immunofluorescence start at 10 µg/mL. Antibody validated: Western Blot in mouse samples; Immunocytochemistry in mouse samples



Immunocytochemistry  
of Raptor in L1210

C...



Immunofluorescence  
of Raptor in L1210

ce...