

Product Datasheet

RBBP8 Antibody (orb1239154)

Description

RBBP8 Antibody

Species/Host

Rabbit

Reactivity

Human, Mouse, Rat

Conjugation

Unconjugated

Tested

ELISA, IF, IHC-P, WB

Applications

Immunogen

RBBP8 antibody was raised against a 14 amino acid synthetic peptide near the center of human RBBP8. The immunogen is located within amino acids 430 - 480 of RBBP8.

Target

RBBP8

Preservatives

RBBP8 Antibody is supplied in PBS containing 0.02% sodium azide.

Form/Appearance

Liquid

Concentration

1 mg/mL

Storage

RBBP8 antibody can be stored at 4°C for three months and -20°C, stable for up to one year. As with all antibodies care should be taken to avoid repeated freeze thaw cycles. Antibodies should not be exposed to prolonged high temperatures.

Note

For research use only

Application notes

RBBP8 antibody can be used for detection of RBBP8 by Western blot at 1 - 2 µg/mL. Antibody can also be used for immunohistochemistry starting at 5 µg/mL. For immunofluorescence start at 20 µg/mL. Antibody validated: Western Blot in mouse samples; Immunohistochemistry in rat samples and Immunofluorescence in rat samples. All other applications and species not yet tested.

Isotype

IgG

Clonality

Polyclonal

Uniprot ID

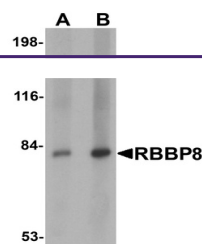
Q99708

NCBI

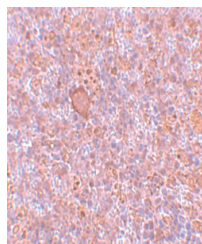
NP_976037

Dilution Range

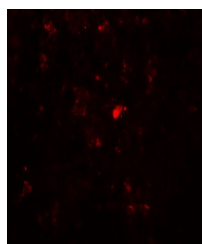
RBBP8 antibody can be used for detection of RBBP8 by Western blot at 1 - 2 µg/mL. Antibody can also be used for immunohistochemistry starting at 5 µg/mL. For immunofluorescence start at 20 µg/mL. Antibody validated: Western Blot in mouse samples; Immunohistochemistry in rat samples and



Western blot analysis of RBBP8 in mouse ...



Immunohistochemistry of RBBP8 in rat spleen...



Immunofluorescence of RBBP8 in rat spleen...