

Product Datasheet

DPF2 Antibody (orb1239147)

Description

DPF2 Antibody

Species/Host

Rabbit

Reactivity

Human, Mouse

Conjugation

Unconjugated

Tested

ELISA, IF, IHC-P, WB

Applications
Immunogen

REQUIEM antibody was raised against an 18 amino acid synthetic peptide near the carboxy terminus of human Requem. The immunogen is located within the last 50 amino acids of REQUIEM.

Target

DPF2

Preservatives

REQUIEM Antibody is supplied in PBS containing 0.02% sodium azide.

Form/Appearance

Liquid

Concentration

1 mg/mL

Storage

REQUIEM antibody can be stored at 4°C for three months and -20°C, stable for up to one year. As with all antibodies care should be taken to avoid repeated freeze thaw cycles. Antibodies should not be exposed to prolonged high temperatures.

Note

For research use only

Application notes

REQUIEM antibody can be used for detection of REQUIEM by Western blot at 1 µg/mL. Antibody can also be used for immunohistochemistry starting at 5 µg/mL. For immunofluorescence start at 20 µg/mL. Antibody validated: Western Blot in mouse samples; Immunohistochemistry in human samples and Immunofluorescence in human samples. All other applications and species not yet tested.

Isotype

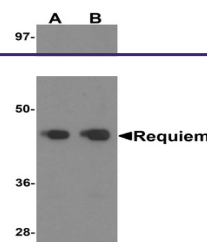
IgG

Clonality

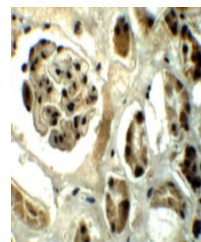
Polyclonal

Uniprot ID
Q92785
NCBI
AAB81203
Dilution Range

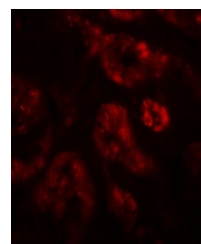
REQUIEM antibody can be used for detection of REQUIEM by Western blot at 1 µg/mL. Antibody can also be used for immunohistochemistry starting at 5 µg/mL. For immunofluorescence start at 20 µg/mL. Antibody validated: Western Blot in mouse samples; Immunohistochemistry in human samples



Western blot analysis of Requem in mous...



Immunohistochemistry of REQUIEM in human...



Immunofluorescence of REQUIEM in human k...