

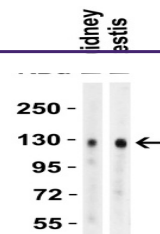
Product Datasheet

ACE2 Antibody (orb1239135)

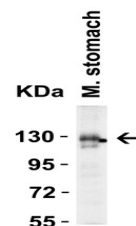
Description

ACE2 Antibody

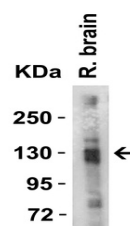
Species/Host	Rabbit
Reactivity	Human, Mouse, Rat
Conjugation	Unconjugated
Tested Applications	ELISA, IF, IHC-P, WB
Immunogen	ACE2 antibody was raised against a synthetic peptide corresponding to amino acids near the center of human ACE2. The immunogen is located within amino acids 150 - 200 of ACE2.
Target	ACE2
Preservatives	ACE2 Antibody is supplied in PBS containing 0.02% sodium azide.
Form/Appearance	Liquid
Concentration	1 mg/mL
Storage	ACE2 antibody can be stored at 4°C for three months and -20°C, stable for up to one year. As with all antibodies care should be taken to avoid repeated freeze thaw cycles. Antibodies should not be exposed to prolonged high temperatures.
Note	For research use only
Application notes	WB: 4 µg/mL; IHC: 2 µg/mL; IF: 20 µg/mL. Antibody validated: Western Blot in human, mouse and rat samples; Immunohistochemistry in human, mouse and rat samples; Immunofluorescence in human, mouse, and rat samples. All other applications and species not yet tested.
Isotype	IgG
Clonality	Polyclonal
MW	Predicted: 93kD Observed: 130 kD (7 N-linked glycosylation)
Uniprot ID	Q9BYF1
NCBI	NP_068576
Dilution Range	WB: 4 µg/mL; IHC: 2 µg/mL; IF: 20 µg/mL. Antibody validated: Western Blot in human, mouse and rat samples; Immunohistochemistry in human, mouse and rat samples; Immunofluorescence in human, mouse, and rat samples. All other applications and species not yet tested.
Expiration Date	12 months from date of receipt.



Western Blot Validation in Human Tissues...



Western Blot Validation in Mouse Stomach...



Western Blot Validation in Rat Brain Tis...