

Product Datasheet

RILPL1 Antibody (orb1239131)

Description

RILPL1 Antibody

Species/Host

Rabbit

Reactivity

Human, Mouse, Rat

Conjugation

Unconjugated

Tested

ELISA, IF, WB

Applications

Immunogen

RILPL1 antibody was raised against a 17 amino acid synthetic peptide near the amino terminus of human RILPL1. The immunogen is located within the last 50 amino acids of RILPL1.

Target

RILPL1

Preservatives

RILPL1 Antibody is supplied in PBS containing 0.02% sodium azide.

Form/Appearance

Liquid

Concentration

1 mg/mL

Storage

RILPL1 antibody can be stored at 4°C for three months and -20°C, stable for up to one year. As with all antibodies care should be taken to avoid repeated freeze thaw cycles. Antibodies should not be exposed to prolonged high temperatures.

Note

For research use only

Application notes

RILPL1 antibody can be used for detection of RILPL1 by Western blot at 0.5 and 1 µg/mL. Antibody can also be used for immunofluorescence starting at 20 µg/mL. For immunofluorescence start at 20 µg/mL. Antibody validated: Western Blot in rat samples and Immunofluorescence in mouse samples. All other applications and species not yet tested.

Isotype

IgG

Clonality

Polyclonal

Uniprot ID

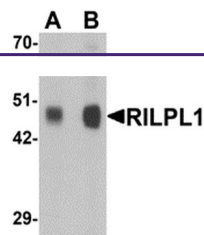
[Q5EBL4](#)

NCBI

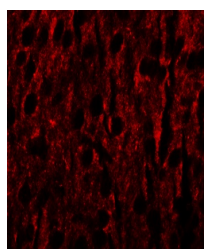
[AAH89444](#)

Dilution Range

RILPL1 antibody can be used for detection of RILPL1 by Western blot at 0.5 and 1 µg/mL. Antibody can also be used for immunofluorescence starting at 20 µg/mL. For immunofluorescence start at 20 µg/mL. Antibody validated: Western Blot in rat samples and Immunofluorescence in mouse samples. All other applications and species not yet tested.



Western blot analysis of RILPL1 in rat c...



Immunofluorescence of RILPL1 in mouse brain tissue