

Product Datasheet

RILPL2 Antibody (orb1239122)

Description

RILPL2 Antibody

Species/Host

Rabbit

Reactivity

Human

Conjugation

Unconjugated

Tested

ELISA, IF, IHC-P, WB

Applications

Immunogen

RLP2 antibody was raised against an 16 amino acid synthetic peptide near the center of human RLP2. The immunogen is located within amino acids 110 - 160 of RLP2.

Target

RILPL2

Preservatives

RLP2 Antibody is supplied in PBS containing 0.02% sodium azide.

Form/Appearance

Liquid

Concentration

1 mg/mL

Storage

RLP2 antibody can be stored at 4°C for three months and -20°C, stable for up to one year. As with all antibodies care should be taken to avoid repeated freeze thaw cycles. Antibodies should not be exposed to prolonged high temperatures.

Note

For research use only

Application notes

RLP2 antibody can be used for detection of RLP2 by Western blot at 1 - 2 µg/mL. Antibody can also be used for immunohistochemistry starting at 2.5 µg/mL. For immunofluorescence start at 2.5 µg/mL. Antibody validated: Western Blot in human samples; Immunohistochemistry in human samples and Immunofluorescence in human samples. All other applications and species not yet tested.

Isotype

IgG

Clonality

Polyclonal

Uniprot ID

[Q969X0](#)

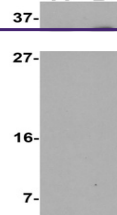
NCBI

[NP_659495](#)

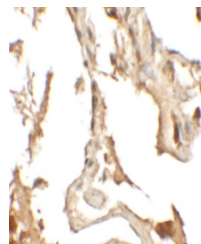
Dilution Range

RLP2 antibody can be used for detection of RLP2 by Western blot at 1 - 2 µg/mL. Antibody can also be used for immunohistochemistry starting at 2.5 µg/mL. For immunofluorescence start at 2.5 µg/mL. Antibody validated: Western Blot in human samples; Immunohistochemistry in human samples

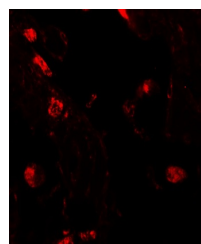
A B



Western blot analysis of RLP2 in A549 ce...



Immunohistochemistry of RLP2 in human lu...



Immunofluorescence of RLP2 in human lung...