

Product Datasheet

AGTR1 Antibody (orb1239109)

Description

AGTR1 Antibody

Species/Host

Rabbit

Reactivity

Human, Mouse, Rat

Conjugation

Unconjugated

Tested

ELISA, IF, IHC-P, WB

Applications

Immunogen

AGTR1 antibody was raised against a 16 amino acid synthetic peptide from near the center of human AGTR1. The immunogen is located within amino acids 210 - 260 of AGTR1.

Target

AGTR1

Preservatives

AGTR1 Antibody is supplied in PBS containing 0.02% sodium azide.

Form/Appearance

Liquid

Concentration

1 mg/mL

Storage

AGTR1 antibody can be stored at 4°C for three months and -20°C, stable for up to one year. As with all antibodies care should be taken to avoid repeated freeze thaw cycles. Antibodies should not be exposed to prolonged high temperatures.

Note

For research use only

Application notes

AGTR1 antibody can be used for detection of AGTR1 by Western blot at 1 - 2 µg/mL. Antibody can also be used for immunohistochemistry starting at 2.5 µg/mL. For immunofluorescence start at 20 µg/mL. Antibody validated: Western Blot in mouse samples; Immunohistochemistry in mouse samples and Immunofluorescence in mouse samples. All other applications and species not yet tested.

Isotype

IgG

Clonality

Polyclonal

Uniprot ID

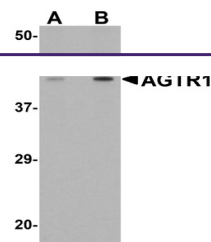
P30556

NCBI

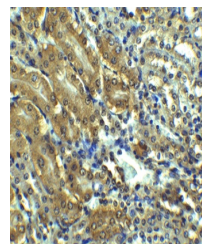
EAW78909

Dilution Range

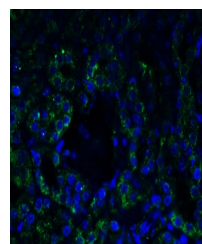
AGTR1 antibody can be used for detection of AGTR1 by Western blot at 1 - 2 µg/mL. Antibody can also be used for immunohistochemistry starting at 2.5 µg/mL. For immunofluorescence start at 20 µg/mL. Antibody validated: Western Blot in mouse samples; Immunohistochemistry in mouse samples



Western blot analysis of AGTR1 in mouse ...



Immunohistochemistry of AGTR1 in mouse k...



Immunofluorescence of AGTR1 in Mouse Kid...