

## Product Datasheet

### RSPO3 Antibody (orb1239107)

## Description

RSPO3 Antibody

### Species/Host

Rabbit

### Reactivity

Human, Mouse

### Conjugation

Unconjugated

### Tested Applications

ELISA, ICC, IF, WB

### Immunogen

RSPO3 antibody was raised against a 19 amino acid peptide near the carboxy terminus of human RSPO3. The immunogen is located within amino acids 200 - 250 of RSPO3.

### Target

RSPO3

### Preservatives

RSPO3 antibody is supplied in PBS containing 0.02% sodium azide.

### Form/Appearance

Liquid

### Concentration

1 mg/mL

### Storage

RSPO3 antibody can be stored at 4°C for three months and -20°C, stable for up to one year.

### Note

For research use only

### Application notes

RSPO3 antibody can be used for detection of RSPO3 by Western blot at 1 - 2 µg/mL. Antibody can also be used for immunocytochemistry starting at 5 µg/mL. For immunofluorescence start at 20 µg/mL. Antibody validated: Western Blot in human samples; Immunocytochemistry in human samples and Immunofluorescence in human samples. All other applications and species not yet tested.

### Isotype

IgG

### Clonality

Polyclonal

### MW

Predicted: 30 kDa Observed: 30 kDa

### Uniprot ID

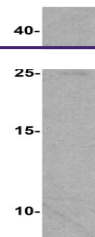
[Q9BXY4](#)

### NCBI

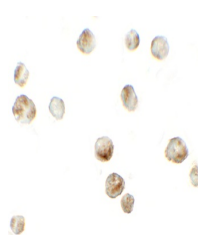
[NP\\_116173](#)

### Dilution Range

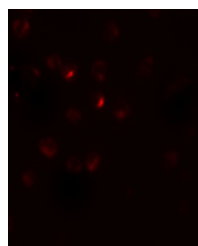
RSPO3 antibody can be used for detection of RSPO3 by Western blot at 1 - 2 µg/mL. Antibody can also be used for immunocytochemistry starting at 5 µg/mL. For immunofluorescence start at 20 µg/mL. Antibody validated: Western Blot in human samples; Immunocytochemistry in human samples and Immunofluorescence in human samples. All other applications and species not yet tested.



Western blot analysis of RSPO3 in 293 cells



Immunocytochemistry of RSPO3 in 293 cells



Immunofluorescence of RSPO3 in 293 cells