

Product Datasheet

RUSC2 Antibody (orb1239103)

Description

RUSC2 Antibody

Species/Host

Rabbit

Reactivity

Human, Mouse

Conjugation

Unconjugated

Tested

ELISA, IF, IHC-P, WB

Applications

Immunogen

RUSC2 antibody was raised against an 18 amino acid synthetic peptide from near the amino terminus of human RUSC2. The immunogen is located within amino acids 70 - 120 of RUSC2.

Target

RUSC2

Preservatives

RUSC2 Antibody is supplied in PBS containing 0.02% sodium azide.

Form/Appearance

Liquid

Concentration

1 mg/mL

Storage

RUSC2 antibody can be stored at 4°C for three months and -20°C, stable for up to one year. As with all antibodies care should be taken to avoid repeated freeze thaw cycles. Antibodies should not be exposed to prolonged high temperatures.

Note

For research use only

Application notes

RUSC2 antibody can be used for detection of RUSC2 by Western blot at 1 µg/mL. Antibody can also be used for immunohistochemistry starting at 5 µg/mL. For immunofluorescence start at 20 µg/mL. Antibody validated: Western Blot in human samples; Immunohistochemistry in human samples and Immunofluorescence in human samples. All other applications and species not yet tested.

Isotype

IgG

Clonality

Polyclonal

Uniprot ID

[Q8N2Y8](#)

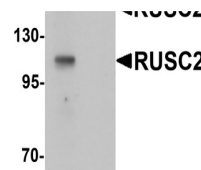
NCBI

[NP_055621](#)

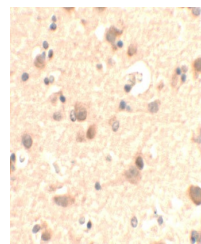
Dilution Range

RUSC2 antibody can be used for detection of RUSC2 by Western blot at 1 µg/mL. Antibody can also be used for immunohistochemistry starting at 5 µg/mL. For immunofluorescence start at 20 µg/mL. Antibody validated: Western Blot in human samples; Immunohistochemistry in human samples and

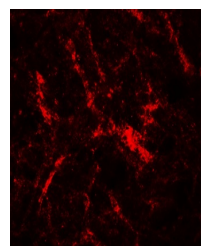
A B



Western blot analysis of RUSC2 in SK-N-S...



Immunohistochemistry of RUSC2 in human brain tissue



Immunofluorescence of RUSC2 in human brain tissue