

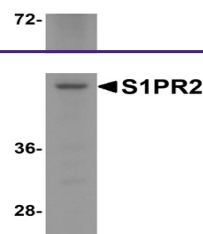
Product Datasheet

S1PR2 Antibody (orb1239101)

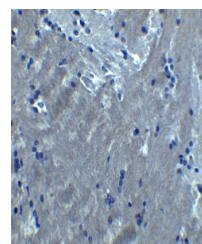
Description

S1PR2 Antibody

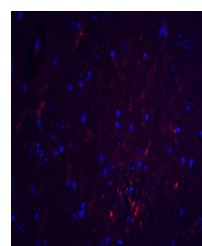
Species/Host	Rabbit
Reactivity	Human, Mouse, Rat
Conjugation	Unconjugated
Tested Applications	ELISA, IF, IHC-P, WB
Immunogen	S1PR2 antibody was raised against an 16 amino acid peptide near the carboxy terminus of human S1PR2. The immunogen is located within amino acids 270 - 320 of S1PR2.
Target	S1PR2
Preservatives	S1PR2 antibody is supplied in PBS containing 0.02% sodium azide.
Form/Appearance	Liquid
Concentration	1 mg/mL
Storage	S1PR2 antibody can be stored at 4°C for three months and -20°C, stable for up to one year.
Note	For research use only
Application notes	S1PR2 antibody can be used for detection of S1PR2 by Western blot at 1 - 2 µg/ml. Antibody can also be used for immunohistochemistry at 10 µg/ml. Antibody validated: Western Blot in human samples; Immunohistochemistry in mouse samples and Immunofluorescence in mouse samples. All other applications and species not yet tested.
Isotype	IgG
Clonality	Polyclonal
MW	Predicted: 39 kDa Observed: 50 kDa
Uniprot ID	O95136
NCBI	NP_004221
Dilution Range	S1PR2 antibody can be used for detection of S1PR2 by Western blot at 1 - 2 µg/ml. Antibody can also be used for immunohistochemistry at 10 µg/ml. Antibody validated: Western Blot in human samples; Immunohistochemistry in mouse samples and Immunofluorescence in mouse samples. All other applications and species not yet tested.
Expiration Date	12 months from date of receipt.



Western blot analysis of S1PR2 in HeLa c...



Immunohistochemistry of S1PR2 in mouse b...



Immunofluorescence of S1PR2 in mouse bra...