

Product Datasheet

AP3B2 Antibody (orb1239098)

Description

AP3B2 Antibody

Species/Host

Rabbit

Reactivity

Human, Mouse, Rat

Conjugation

Unconjugated

Tested

ELISA, IF, IHC-P, WB

Applications

Immunogen

AP3B2 antibody was raised against an 18 amino acid synthetic peptide near the amino terminus of human AP3B2. The immunogen is located within the first 50 amino acids of AP3B2.

Target

AP3B2

Preservatives

AP3B2 Antibody is supplied in PBS containing 0.02% sodium azide.

Form/Appearance

Liquid

Concentration

1 mg/mL

Storage

AP3B2 antibody can be stored at 4°C for three months and -20°C, stable for up to one year. As with all antibodies care should be taken to avoid repeated freeze thaw cycles. Antibodies should not be exposed to prolonged high temperatures.

Note

For research use only

Application notes

AP3B2 antibody can be used for detection of AP3B2 by Western blot at 1 - 2 µg/mL. Antibody can also be used for immunohistochemistry starting at 5 µg/mL. For immunofluorescence start at 20 µg/mL. Antibody validated: Western Blot in mouse and rat samples; Immunohistochemistry in mouse samples and Immunofluorescence in mouse samples. All other applications and species not yet tested.

Isotype

IgG

Clonality

Polyclonal

MW

Predicted: 121 kDa Observed: 128 kDa

Uniprot ID

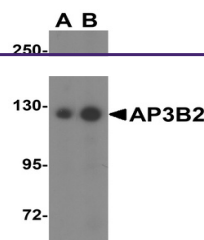
[Q13367](#)

NCBI

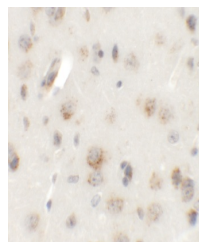
[NP_001265440](#)

Dilution Range

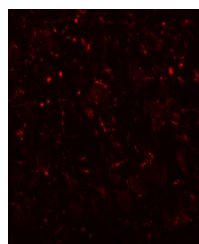
AP3B2 antibody can be used for detection of AP3B2 by Western blot at 1 - 2 µg/mL. Antibody can also be used for immunohistochemistry starting at 5 µg/mL. For immunofluorescence start at 20 µg/mL. Antibody validated: Western Blot in mouse and rat samples;



Western blot analysis of AP3B2 in rat br...



Immunohistochemistry of AP3B2 in mouse b...



Immunofluorescence of AP3B2 in mouse bra...