

## Product Datasheet

### BCL9L Antibody (orb1239054)

## Description

## BCL9L Antibody

### Species/Host

Rabbit

### Reactivity

Human

### Conjugation

Unconjugated

### Tested

ELISA, ICC, IF, IHC-P, WB

### Applications

### Immunogen

Bcl9L antibody was raised against a 20 amino acid synthetic peptide near the amino terminus of human Bcl9L. The immunogen is located within amino acids 20 - 70 of Bcl9L.

### Target

BCL9L

### Preservatives

Bcl9L Antibody is supplied in PBS containing 0.02% sodium azide.

### Form/Appearance

Liquid

### Concentration

1 mg/mL

### Storage

Bcl9L antibody can be stored at 4°C for three months and -20°C, stable for up to one year. As with all antibodies care should be taken to avoid repeated freeze thaw cycles. Antibodies should not be exposed to prolonged high temperatures.

### Note

For research use only

### Application notes

Bcl9L antibody can be used for detection of Bcl9L by Western blot at 1 µg/mL. Antibody can also be used for immunohistochemistry starting at 5 µg/mL and immunocytochemistry starting at 10 µg/mL. For immunofluorescence start at 20 µg/mL. Antibody validated: Western Blot in human samples; Immunohistochemistry in human samples; Immunocytochemistry in human samples and Immunofluorescence in human samples. All other applications and species not yet tested.

### Isotype

IgG

### Clonality

Polyclonal

### MW

Predicted: 165 kDa Observed: 195 kDa

### Uniprot ID

[Q86UU0](#)

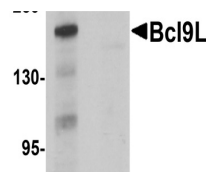
### NCBI

[NP\\_872363](#)

### Dilution Range

Bcl9L antibody can be used for detection of Bcl9L by Western blot at 1 µg/mL. Antibody can also be used for immunohistochemistry starting at 5 µg/mL and

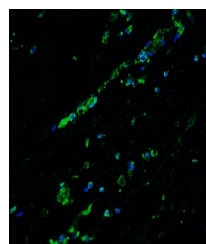
## A B



Western blot analysis of Bcl9L in HeLa cells



Immunocytochemistry of Bcl9L in HeLa cells



Immunofluorescence of Bcl9L in human breast cancer cells