

Product Datasheet

C19orf80 Antibody (orb1239052)

Description

C19orf80 Antibody

Species/Host

Rabbit

Reactivity

Human, Mouse, Rat

Conjugation

Unconjugated

Tested

ELISA, IF, IHC-P, WB

Applications
Immunogen

Betatrophin antibody was raised against a 16 amino acid peptide near the amino terminus of human Betatrophin. The immunogen is located within amino acids 40 - 90 of Betatrophin.

Target

C19orf80

Preservatives

Betatrophin antibody is supplied in PBS containing 0.02% sodium azide.

Form/Appearance

Liquid

Concentration

1 mg/mL

Storage

Betatrophin antibody can be stored at 4°C for three months and -20°C, stable for up to one year.

Note

For research use only

Application notes

Betatrophin antibody can be used for detection of Betatrophin by Western blot at 1 - 2 µg/ml. Antibody can also be used for Immunohistochemistry starting at 5 µg/mL. For immunofluorescence start at 20 µg/mL. Antibody validated: Western Blot in rat samples; Immunohistochemistry in mouse and rat samples and Immunofluorescence in rat samples. All other applications and species not yet tested.

Isotype

IgG

Clonality

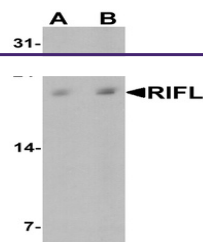
Polyclonal

MW

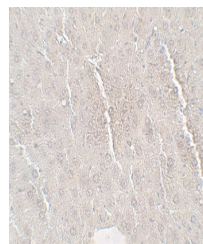
Predicted: 22 kDa Observed: 22 kDa

Uniprot ID
[Q6UXH0](#)
NCBI
[NP_061157](#)
Dilution Range

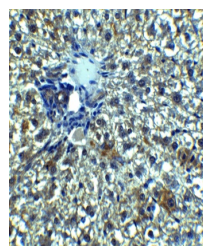
Betatrophin antibody can be used for detection of Betatrophin by Western blot at 1 - 2 µg/ml. Antibody can also be used for Immunohistochemistry starting at 5 µg/mL. For immunofluorescence start at 20 µg/mL. Antibody validated: Western Blot in rat samples; Immunohistochemistry in mouse and rat samples and Immunofluorescence in rat samples. All other applications and species not yet tested.



Western blot analysis of Betatrophin in ...



Immunohistochemistry of Betatrophin in m...



Immunohistochemistry of Betatrophin in r...