

## Product Datasheet

### CXCR6 Antibody (orb1239049)

## Description

CXCR6 Antibody

### Species/Host

Rabbit

### Reactivity

Human

### Conjugation

Unconjugated

### Tested

ELISA, IF, IHC-P, WB

### Applications

### Immunogen

Bonzo antibody was raised against a peptide corresponding to 15 amino acids near the amino terminus of human Bonzo/STRL33. The immunogen is located within the first 50 amino acids of Bonzo.

### Target

CXCR6

### Preservatives

Bonzo Antibody is supplied in PBS containing 0.02% sodium azide.

### Form/Appearance

Liquid

### Concentration

1 mg/mL

### Storage

Bonzo antibody can be stored at 4°C for three months and -20°C, stable for up to one year. As with all antibodies care should be taken to avoid repeated freeze thaw cycles. Antibodies should not be exposed to prolonged high temperatures.

### Note

For research use only

### Application notes

Bonzo antibody can be used for detection of Bonzo by Western blot at 0.5 µg/mL. Antibody can also be used for immunohistochemistry starting at 2.5 µg/mL. For immunofluorescence start at 20 µg/mL. Antibody validated: Western Blot in human samples; Immunohistochemistry in human samples and Immunofluorescence in human samples. All other applications and species not yet tested.

### Isotype

IgG

### Clonality

Polyclonal

### MW

Predicted: 38 kDa Observed: 43 kDa

### Uniprot ID

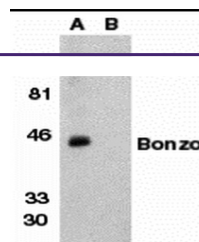
[O00574](#)

### NCBI

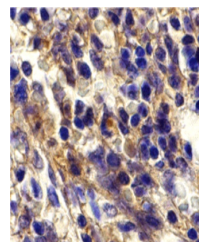
[AAB64221](#)

### Dilution Range

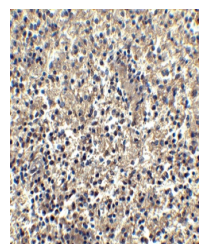
Bonzo antibody can be used for detection of Bonzo by Western blot at 0.5 µg/mL. Antibody can also be used for immunohistochemistry starting at 2.5 µg/mL. For immunofluorescence start at 20 µg/mL. Antibody validated: Western Blot in human



Western blot analysis of Bonzo in human ...



Immunohistochemistry of Bonzo in human s...



Immunohistochemistry of Bonzo in human s...