

Product Datasheet

CAMP Antibody (orb1239040)

Description

CAMP Antibody

Species/Host

Rabbit

Reactivity

Human

Conjugation

Unconjugated

Tested

ELISA, IF, IHC-P, WB

Applications

Immunogen

Cathelicidin antibody was raised against a 17 amino acid synthetic peptide near the center of the human Cathelicidin. The immunogen is located within amino acids 50 - 100 of Cathelicidin.

Target

CAMP

Preservatives

Cathelicidin Antibody is supplied in PBS containing 0.02% sodium azide.

Form/Appearance

Liquid

Concentration

1 mg/mL

Storage

Cathelicidin antibody can be stored at 4°C for three months and -20°C, stable for up to one year. As with all antibodies care should be taken to avoid repeated freeze thaw cycles. Antibodies should not be exposed to prolonged high temperatures.

Note

For research use only

Application notes

Cathelicidin antibody can be used for detection of Cathelicidin by Western blot at 1 µg/mL. Antibody can also be used for immunohistochemistry starting at 5 µg/mL. For immunofluorescence start at 20 µg/mL. Antibody validated: Western Blot in human samples; Immunohistochemistry in human samples and Immunofluorescence in human samples. All other applications and species not yet tested.

Isotype

IgG

Clonality

Polyclonal

MW

Predicted: 19 kDa Observed: 18 kDa

Uniprot ID

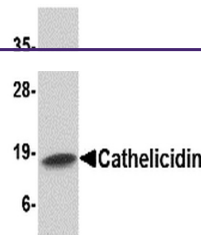
[P49913](#)

NCBI

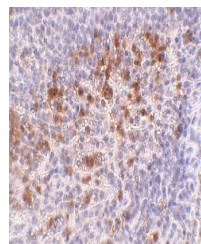
[NP_004336](#)

Dilution Range

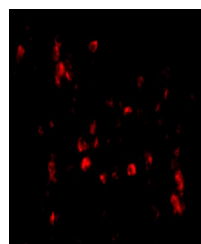
Cathelicidin antibody can be used for detection of Cathelicidin by Western blot at 1 µg/mL. Antibody can also be used for immunohistochemistry starting at 5 µg/mL. For immunofluorescence start at 20 µg/mL. Antibody validated: Western Blot in human



Western blot analysis of Cathelicidin in...



Immunohistochemistry of Cathelicidin in...



Immunofluorescence of Cathelicidin in Hu...