

Product Datasheet

CCR5 Antibody (orb1239039)

Description

CCR5 Antibody

Species/Host

Rabbit

Reactivity

Human

Conjugation

Unconjugated

Tested

ELISA, IF, IHC-P, WB

Applications

Immunogen

CCR5 antibody was raised against a 15 amino acid peptide near the amino terminus of human CCR5. The immunogen is located within the first 50 amino acids of CCR5.

Target

CCR5

Preservatives

CCR5 Antibody is supplied in PBS containing 0.02% sodium azide.

Form/Appearance

Liquid

Concentration

1 mg/ml

Storage

CCR5 antibody can be stored at 4°C for three months and -20°C, stable for up to one year. As with all antibodies care should be taken to avoid repeated freeze thaw cycles. Antibodies should not be exposed to prolonged high temperatures.

Note

For research use only

Application notes

CCR5 antibody can be used for Western blot at 1 µg/mL. CCR5 antibody can also detect CCR5 by immunohistochemistry at 2.5 µg/mL. Antibody validated: Western Blot in human samples; Immunohistochemistry in human samples and Immunofluorescence in human samples. All other applications and species not yet tested.

Isotype

IgG

Clonality

Polyclonal

MW

Predicted: 39 kDa Observed: 40 kDa

Uniprot ID

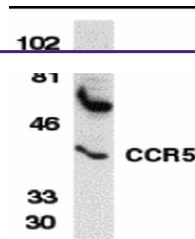
[P51681](#)

NCBI

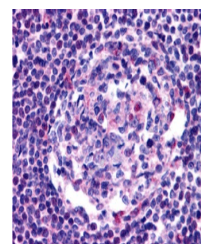
[AAB57793](#)

Dilution Range

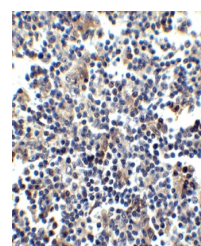
CCR5 antibody can be used for Western blot at 1 µg/mL. CCR5 antibody can also detect CCR5 by immunohistochemistry at 2.5 µg/mL. Antibody validated: Western Blot in human samples; Immunohistochemistry in human samples and Immunofluorescence in human samples. All other



Western blot analysis of CCR5 in THP-1 w...



Immunohistochemistry of CCR5 in human ly...



Immunohistochemistry of CCR5 in human ly...