

Product Datasheet

TNFRSF10D Antibody (orb1239029)

Description

TNFRSF10D Antibody

Species/Host

Rabbit

Reactivity

Human, Mouse, Rat

Conjugation

Unconjugated

Tested

ELISA, ICC, IF, IHC-P, WB

Applications

Immunogen

DcR2 antibody was raised against a 15 amino acid peptide near the center of human DcR2. The immunogen is located within amino acids 230 - 280 of DcR2.

Target

TNFRSF10D

Preservatives

DcR2 Antibody is supplied in PBS containing 0.02% sodium azide.

Form/Appearance

Liquid

Concentration

1 mg/mL

Storage

DcR2 antibody can be stored at 4°C for three months and -20°C, stable for up to one year. As with all antibodies care should be taken to avoid repeated freeze thaw cycles. Antibodies should not be exposed to prolonged high temperatures.

Note

For research use only

Application notes

DcR2 antibody can be used for detection of DcR2 expression by Western blot at 1 µg/mL. Antibody can also be used for immunocytochemistry starting at 10 µg/mL and Immunohistochemistry starting at 2.5 µg/mL. For immunofluorescence start at 20 µg/mL. Antibody validated: Western Blot in human samples; Immunohistochemistry in mouse samples; Immunocytochemistry in human samples and Immunofluorescence in mouse samples. All other applications and species not yet tested.

Isotype

IgG

Clonality

Polyclonal

MW

Predicted: 36 kDa Observed: 36 kDa

Uniprot ID

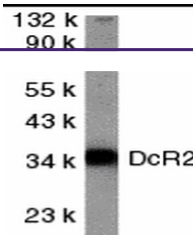
[Q9UBN6](#)

NCBI

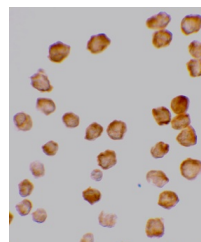
[Q9UBN6](#)

Dilution Range

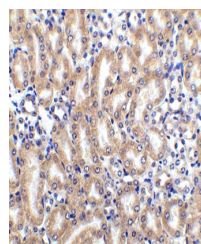
DcR2 antibody can be used for detection of DcR2 expression by Western blot at 1 µg/mL. Antibody can also be used for immunocytochemistry starting



Western blot analysis of DcR2 in HeLa wh...



Immunocytochemistry staining of HeLa cel...



Immunohistochemistry of DcR2 in mouse ki...