

## Product Datasheet

### DNASE2 Antibody (orb1239023)

## Description

## DNASE2 Antibody

### Species/Host

Rabbit

### Reactivity

Human

### Conjugation

Unconjugated

### Tested

ELISA, IF, IHC-P, WB

### Applications

### Immunogen

DNase II antibody was raised against a 14 amino acid peptide near the carboxy terminus of human DNase II. The immunogen is located within the last 50 amino acids of DNase II.

### Target

DNASE2

### Preservatives

DNase II Antibody is supplied in PBS containing 0.02% sodium azide.

### Form/Appearance

Liquid

### Concentration

1 mg/ml

### Storage

DNase II antibody can be stored at 4°C for three months and -20°C, stable for up to one year. As with all antibodies care should be taken to avoid repeated freeze thaw cycles. Antibodies should not be exposed to prolonged high temperatures.

### Note

For research use only

### Application notes

DNase II antibody can be used for detection of DNase II expression by Western blot at 0.5 µg/mL. An approximate 40 kDa band can be detected, which represents the pro-enzyme of DNase II. Antibody can also be used for immunohistochemistry starting at 5 µg/mL. For immunofluorescence start at 5 µg/mL. Antibody validated: Western Blot in human samples; Immunohistochemistry in human samples and Immunofluorescence in human samples. All other applications and species not yet tested.

### Isotype

IgG

### Clonality

Polyclonal

### MW

Aprox: 40 kDa

### Uniprot ID

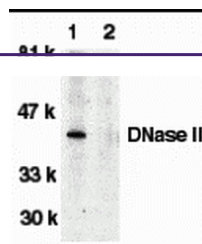
[O00115](#)

### NCBI

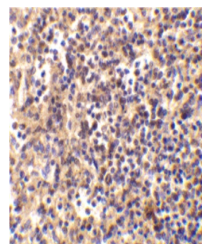
[AF047016](#)

### Dilution Range

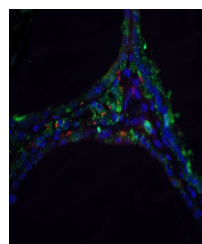
DNase II antibody can be used for detection of DNase II expression by Western blot at 0.5 µg/ml



Western blot analysis of DNase II in hum...



Immunohistochemistry of DNase II in human...



Immunofluorescence of DNase II in human

...