

Product Datasheet

SATB2 Antibody (orb1239020)

Description

SATB2 Antibody

Species/Host

Rabbit

Reactivity

Human, Mouse, Rat

Conjugation

Unconjugated

Tested

ELISA, IF, IHC-P, WB

Applications

Immunogen

SATB2 antibody was raised against a 16 amino acid synthetic peptide near the amino terminus of the human SATB2. The immunogen is located within the first 50 amino acids of SATB2.

Target

SATB2

Preservatives

SATB2 Antibody is supplied in PBS containing 0.02% sodium azide.

Form/Appearance

Liquid

Concentration

1 mg/mL

Storage

SATB2 antibody can be stored at 4°C for three months and -20°C, stable for up to one year. As with all antibodies care should be taken to avoid repeated freeze thaw cycles. Antibodies should not be exposed to prolonged high temperatures.

Note

For research use only

Application notes

SATB2 antibody can be used for detection of SATB2 by Western blot at 2 - 4 µg/mL. Antibody can also be used for immunohistochemistry starting at 5 µg/mL. For immunofluorescence start at 20 µg/mL. Antibody validated: Western Blot in mouse samples; Immunohistochemistry in human samples and Immunofluorescence in human samples. All other applications and species not yet tested.

Isotype

IgG

Clonality

Polyclonal

Uniprot ID

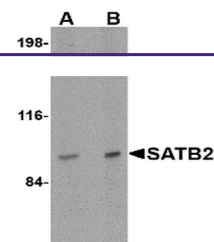
[Q9UPW6](#)

NCBI

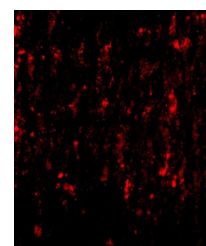
[Q9UPW6](#)

Dilution Range

SATB2 antibody can be used for detection of SATB2 by Western blot at 2 - 4 µg/mL. Antibody can also be used for immunohistochemistry starting at 5 µg/mL. For immunofluorescence start at 20 µg/mL. Antibody validated: Western Blot in mouse samples; Immunohistochemistry in human samples and



Western blot analysis of SATB2 in mouse ...



Immunofluorescence of SATB2 in Human Bra...