

Product Datasheet

SCUBE3 Antibody (orb1239005)

Description

SCUBE3 Antibody

Species/Host

Rabbit

Reactivity

Human, Mouse

Conjugation

Unconjugated

Tested

ELISA, IF, WB

Applications

Immunogen

SCUBE3 antibody was raised against a 15 amino acid synthetic peptide near the center of human SCUBE3. The immunogen is located within amino acids 210 - 260 of SCUBE3.

Target

SCUBE3

Preservatives

SCUBE3 Antibody is supplied in PBS containing 0.02% sodium azide.

Form/Appearance

Liquid

Concentration

1 mg/mL

Storage

SCUBE3 antibody can be stored at 4°C for three months and -20°C, stable for up to one year. As with all antibodies care should be taken to avoid repeated freeze thaw cycles. Antibodies should not be exposed to prolonged high temperatures.

Note

For research use only

Application notes

SCUBE3 antibody can be used for detection of SCUBE3 by Western blot at 1 - 2 µg/mL. For immunofluorescence start at 20 µg/mL. Antibody validated: Western Blot in mouse samples and Immunofluorescence in human samples. All other applications and species not yet tested.

Isotype

IgG

Clonality

Polyclonal

MW

109 kDa

Uniprot ID

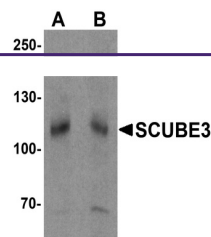
[Q8IX30](#)

NCBI

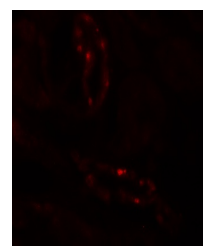
[NP_689966](#)

Dilution Range

SCUBE3 antibody can be used for detection of SCUBE3 by Western blot at 1 - 2 µg/mL. For immunofluorescence start at 20 µg/mL. Antibody validated: Western Blot in mouse samples and Immunofluorescence in human samples. All other applications and species not yet tested.



Western blot analysis of SCUBE3 in mouse...



Immunofluorescence of SCUBE3 in human kidney...