

Product Datasheet

SGSM2 Antibody (orb1238991)

Description
SGSM2 Antibody
Species/Host

Rabbit

Reactivity

Human, Mouse, Rat

Conjugation

Unconjugated

Tested

ELISA, IF, WB

Applications
Immunogen

SGSM2 antibody was raised against an 18 amino acid synthetic peptide near the center of human SGSM2. The immunogen is located within amino acids 650 - 700 of SGSM2.

Target

SGSM2

Preservatives

SGSM2 Antibody is supplied in PBS containing 0.02% sodium azide.

Form/Appearance

Liquid

Concentration

1 mg/mL

Storage

SGSM2 antibody can be stored at 4°C for three months and -20°C, stable for up to one year. As with all antibodies care should be taken to avoid repeated freeze thaw cycles. Antibodies should not be exposed to prolonged high temperatures.

Note

For research use only

Application notes

SGSM2 antibody can be used for detection of SGSM2 by Western blot at 1 µg/mL. For immunofluorescence start at 20 µg/mL. Antibody validated: Western Blot in human samples and Immunofluorescence in human samples. All other applications and species not yet tested.

Isotype

IgG

Clonality

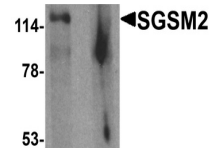
Polyclonal

MW

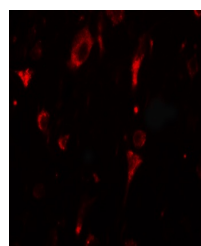
116 kDa

Uniprot ID
[O43147](#)
NCBI
[NP_055668](#)
Dilution Range

SGSM2 antibody can be used for detection of SGSM2 by Western blot at 1 µg/mL. For immunofluorescence start at 20 µg/mL. Antibody validated: Western Blot in human samples and Immunofluorescence in human samples. All other applications and species not yet tested.

A B


Western blot analysis of SGSM2 in human ...



Immunofluorescence of SGSM2 in human bra...