

Product Datasheet

SH3RF2 Antibody (orb1238988)

Description

SH3RF2 Antibody

Species/Host

Rabbit

Reactivity

Human, Mouse, Rat

Conjugation

Unconjugated

Tested

ELISA, IF, IHC-P, WB

Applications

Immunogen

SH3RF2 antibody was raised against a 17 amino acid synthetic peptide near the carboxy terminus of human SH3RF2. The immunogen is located within the last 50 amino acids of SH3RF2.

Target

SH3RF2

Preservatives

SH3RF2 Antibody is supplied in PBS containing 0.02% sodium azide.

Form/Appearance

Liquid

Concentration

1 mg/mL

Storage

SH3RF2 antibody can be stored at 4°C for three months and -20°C, stable for up to one year. As with all antibodies care should be taken to avoid repeated freeze thaw cycles. Antibodies should not be exposed to prolonged high temperatures.

Note

For research use only

Application notes

SH3RF2 antibody can be used for detection of SH3RF2 by Western blot at 1 - 2 µg/mL. Antibody can also be used for immunohistochemistry starting at 10 µg/mL. For immunofluorescence start at 20 µg/mL. Antibody validated: Western Blot in mouse samples; Immunohistochemistry in human samples and Immunofluorescence in human samples. All other applications and species not yet tested.

Isotype

IgG

Clonality

Polyclonal

Uniprot ID

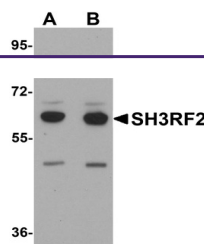
[Q8TEC5](#)

NCBI

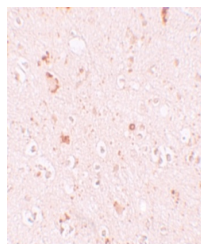
[NP_689763](#)

Dilution Range

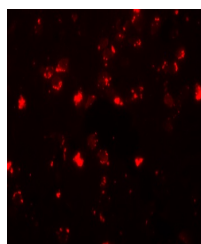
SH3RF2 antibody can be used for detection of SH3RF2 by Western blot at 1 - 2 µg/mL. Antibody can also be used for immunohistochemistry starting at 10 µg/mL. For immunofluorescence start at 20 µg/mL. Antibody validated: Western Blot in mouse samples; Immunohistochemistry in human samples



Western blot analysis of SH3RF2 in 3T3 c...



Immunohistochemistry of SH3RF2 in human ...



Immunofluorescence of SH3RF2 in human br...